

Global Measles and Rubella Update January 2019

Note: EURO data has not been updated in this monthly update, and data submitted by EURO on December 7, 2018 is being used here.

Measles

Number of Reported Measles Cases by WHO Regions



2018																			
Region	Member States*	Suspected cases	Measles cases	Clin	Epi	Lab	Jan	Feb	Mar	Apr	May	Jun	Jul	Aug	Sep	Oct	Nov	Dec	Date Received
AFR	42/47	56690	33879	14937	12254	6688	3049	4320	5105	3569	2565	1577	1600	1271	1922	4761	3791	349	2019-01
AMR	31/35	27485	16966	0	0	16966	2	14	83	148	286	200	408	136	776	2748	6104	6061	2019-01
EMR	20/21	41285	21905	3987	7925	9993	2236	1745	2676	2706	3122	2284	2451	1371	1681	1209	381	43	2019-01
EUR	53/53	69307	59578	33982	2786	22810	5645	6588	7381	7655	8704	7037	5308	3625	2650	4978	7	0	2018-12
SEAR	11/11	95828	73133	55324	11719	6090	8565	8432	13213	11206	10363	4903	3174	3294	2701	3567	2956	759	2019-01
WPR	26/27	67147	23607	14046	595	8966	1923	2484	3381	3218	3002	2250	1982	1658	1608	1547	553	1	2019-01
Total	183/194	357742	229068	122276	35279	71513	21420	23583	31839	28502	28042	18251	14923	11355	11338	18810	13792	7213	

2017																			
Region	Member States*	Suspected cases	Measles cases	Clin	Epi	Lab	Jan	Feb	Mar	Apr	May	Jun	Jul	Aug	Sep	Oct	Nov	Dec	Date Received
AFR	43/47	51575	24847	11008	8853	4986	3218	2896	3650	2370	2026	1859	1475	1412	1519	1695	1315	1412	2019-01
AMR	30/35	10870	850	0	0	850	0	0	0	3	0	0	0	0	0	0	0	847	2019-01
EMR	20/21	36139	12777	1918	693	10166	1103	1080	1296	1280	1460	1057	1061	812	706	941	950	1031	2019-01
EUR	53/53	32004	25465	4438	6459	14568	1422	1871	3004	2885	2919	2572	2258	868	964	1327	2352	3023	2018-12
SEAR	11/11	99723	79369	56164	17492	5713	8572	9758	13139	10343	7564	4627	3888	4412	3846	3167	5011	5042	2019-01
WPR	26/27	54084	11095	2952	481	7662	781	899	1507	1225	1124	806	772	720	767	739	849	906	2019-01
Total	183/194	284395	154403	76480	33978	43945	15096	16504	22596	18106	15093	10921	9454	8224	7802	7869	10477	12261	

Notes: Based on data received 2019-01 - This is surveillance data, hence for the last month, the data may be incomplete. * Member States Reporting / Total Member States in Region

Number of Reported Measles Cases by WHO Regions



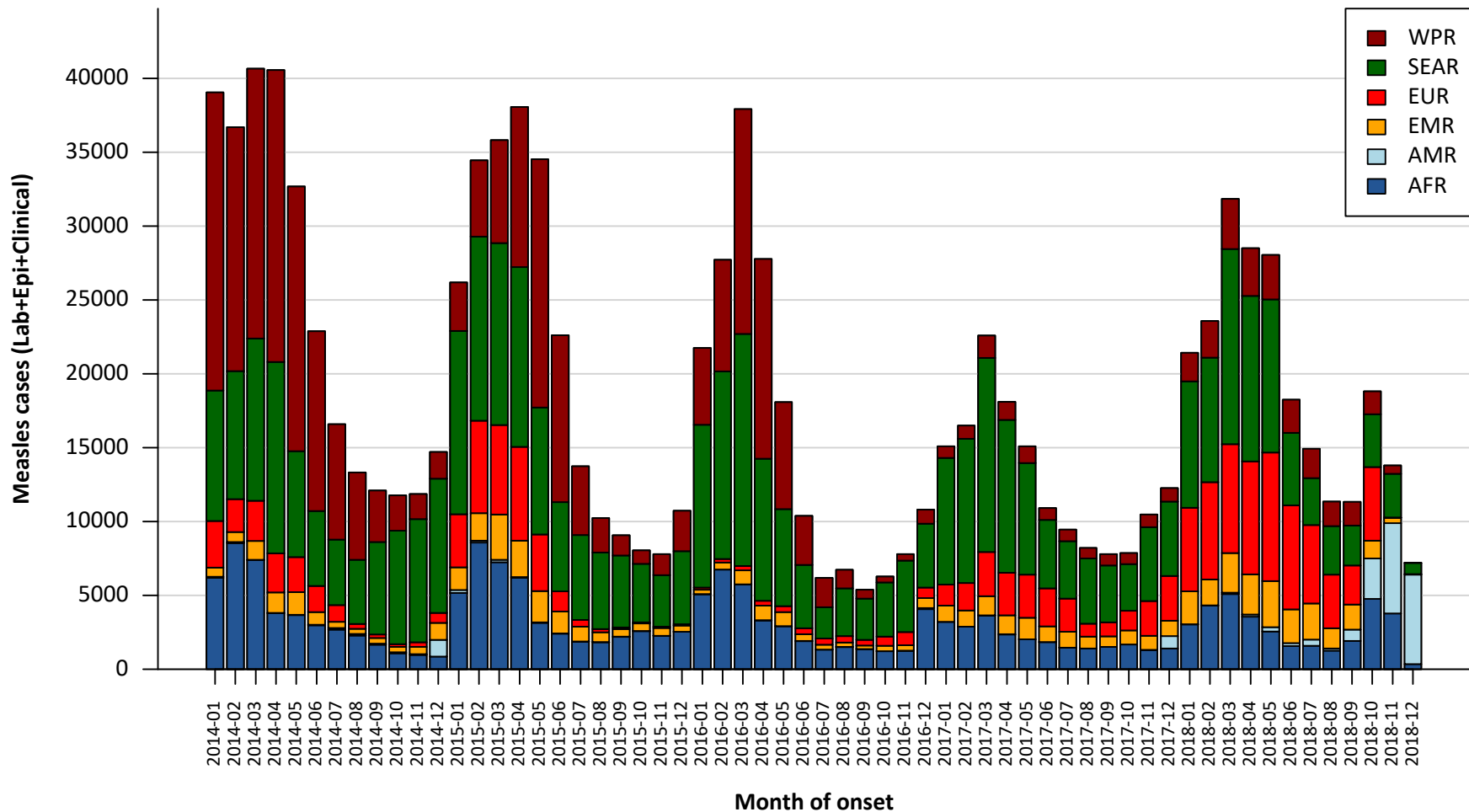
2018																			
Region	Member States*	Suspected cases	Measles cases	Clin	Epi	Lab	Jan	Feb	Mar	Apr	May	Jun	Jul	Aug	Sep	Oct	Nov	Dec	Date Received
AFR	42/47	56690	33879	14937	12254	6688	3049	4320	5105	3569	2565	1577	1600	1271	1922	4761	3791	349	2019-01
AMR	31/35	27485	16966	0	0	16966	2	14	83	148	286	200	408	136	776	2748	6104	6061	2019-01
EMR	20/21	41285	21905	3987	7925	9993	2236	1745	2676	2706	3122	2284	2451	1371	1681	1209	381	43	2019-01
EUR	53/53	69307	59578	33982	2786	22810	5645	6588	7381	7655	8704	7037	5308	3625	2650	4978	7	0	2018-12
SEAR	11/11	95828	73133	55324	11719	6090	8565	8432	13213	11206	10363	4903	3174	3294	2701	3567	2956	759	2019-01
WPR	26/27	67147	23607	14046	595	8966	1923	2484	3381	3218	3002	2250	1982	1658	1608	1547	553	1	2019-01
Total	183/194	357742	229068	122276	35279	71513	21420	23583	31839	28502	28042	18251	14923	11355	11338	18810	13792	7213	

2017																			
Region	Member States*	Suspected cases	Measles cases	Clin	Epi	Lab	Jan	Feb	Mar	Apr	May	Jun	Jul	Aug	Sep	Oct	Nov	Dec	Date Received
AFR	43/47	47604	23610	10198	8731	4681	3576	2896	3594	2362	2064	1870	1453	1364	1477	1588	885	481	2018-01
AMR	30/35	10219	272	1	0	271	2	8	19	13	5	1	4	32	47	17	3	121	2018-01
EMR	20/21	29894	9402	237	672	8493	1109	928	980	1597	1681	898	737	468	388	447	130	39	2018-01
EUR	52/53	20366	16006	2894	4290	8822	1091	1854	2918	2769	1870	1496	1298	826	783	1029	72	0	2017-12
SEAR	11/11	74383	56498	41996	8937	5565	7265	8535	12188	9340	6710	3802	3004	3210	1740	274	324	106	2018-01
WPR	26/27	45923	9329	2434	76	6819	770	872	1483	1207	1107	808	769	701	630	449	533	0	2018-01
Total	182/194	228389	115117	57760	22706	34651	13813	15093	21182	17288	13437	8875	7265	6601	5065	3804	1947	747	

Notes: This is surveillance data, hence for the last month, the data may be incomplete. * Member States Reporting / Total Member States in Region

Measles case distribution by month and WHO Region (2014-2018)

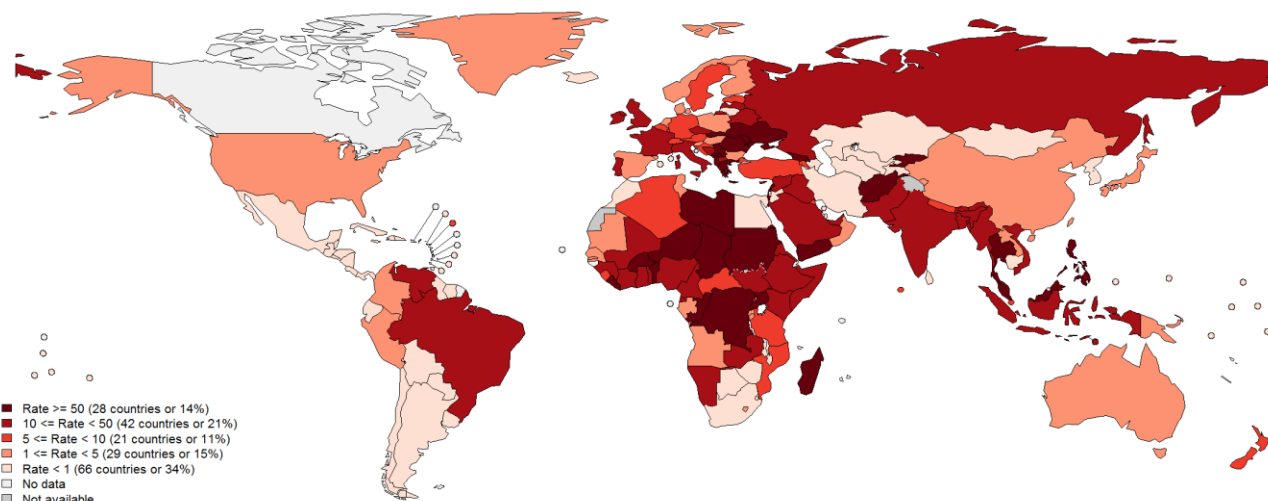
The clustering of cases in AMR at specific time points is an artifact of reporting



Notes: Based on data received 2019-01 - Data Source: IVB Database - This is surveillance data, hence for the last month(s), the data may be incomplete.

Measles Incidence Rate per Million (12M period)

Top 10**		
Country	Cases	Rate
India	65657	49.58
Ukraine	36520	821.81
Philippines	16112	155.94
Brazil	10163	48.94
Yemen	9043	327.83
Nigeria	6745	36.27
DR Congo	5498	69.83
Serbia	5449	617.79
Madagascar	4390	176.34
Thailand	4327	62.83



Other countries with high incidence rates***		
Country	Cases	Rate
Albania	1408	481.15
Liberia	1902	412.24
Georgia	1562	397.92
Montenegro	203	322.93
Greece	2538	226.94
Israel	1304	159.18



Map production: World Health Organization, WHO, 2019. All rights reserved
Data source: IVB Database

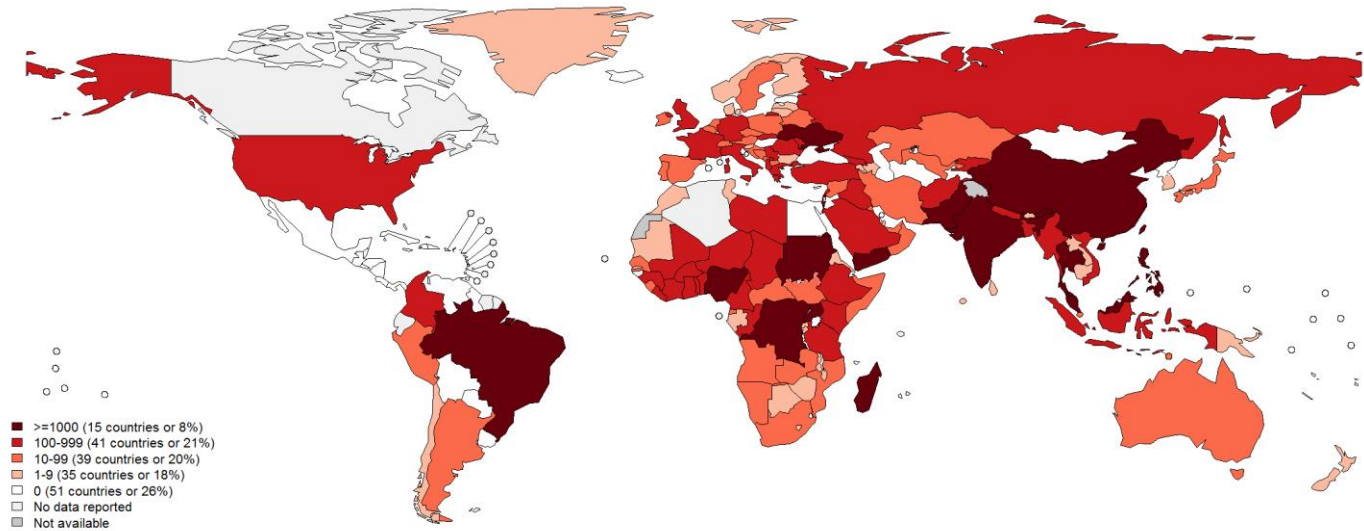
Disclaimer:
The boundaries and names shown and the designations used on this map do not imply the expression of any opinion whatsoever on the part of the World Health Organization concerning the legal status of any country, territory, city or area or of its authorities, or concerning the delimitation of its frontiers or boundaries. Dotted and dashed lines on maps represent approximate border lines for which there may not yet be full agreement.

Measles cases from countries with known discrepancies between case-based and aggregate surveillance, as reported by country			
Country	Year	Cases	Data Source
DR Congo	2017	45165	SITUATION EPIDEMIOLOGIQUE DE LA ROUGEOLE EN RDC, Week of 08/01/2019
	2018	67072	
Somalia	2017	23394	Somali EPI/POL Weekly Update Week 52
	2018	9034	

Notes: Based on data received 2019-01 and covering the period between 2017-12 and 2018-11 - Incidence: Number of cases / population* * 100,000 - * World population prospects, 2017 revision - ** Countries with the highest number of cases for the period - *** Countries with the highest incidence rates (excluding those already listed in the table above)

Number of Reported Measles Cases (6M period)

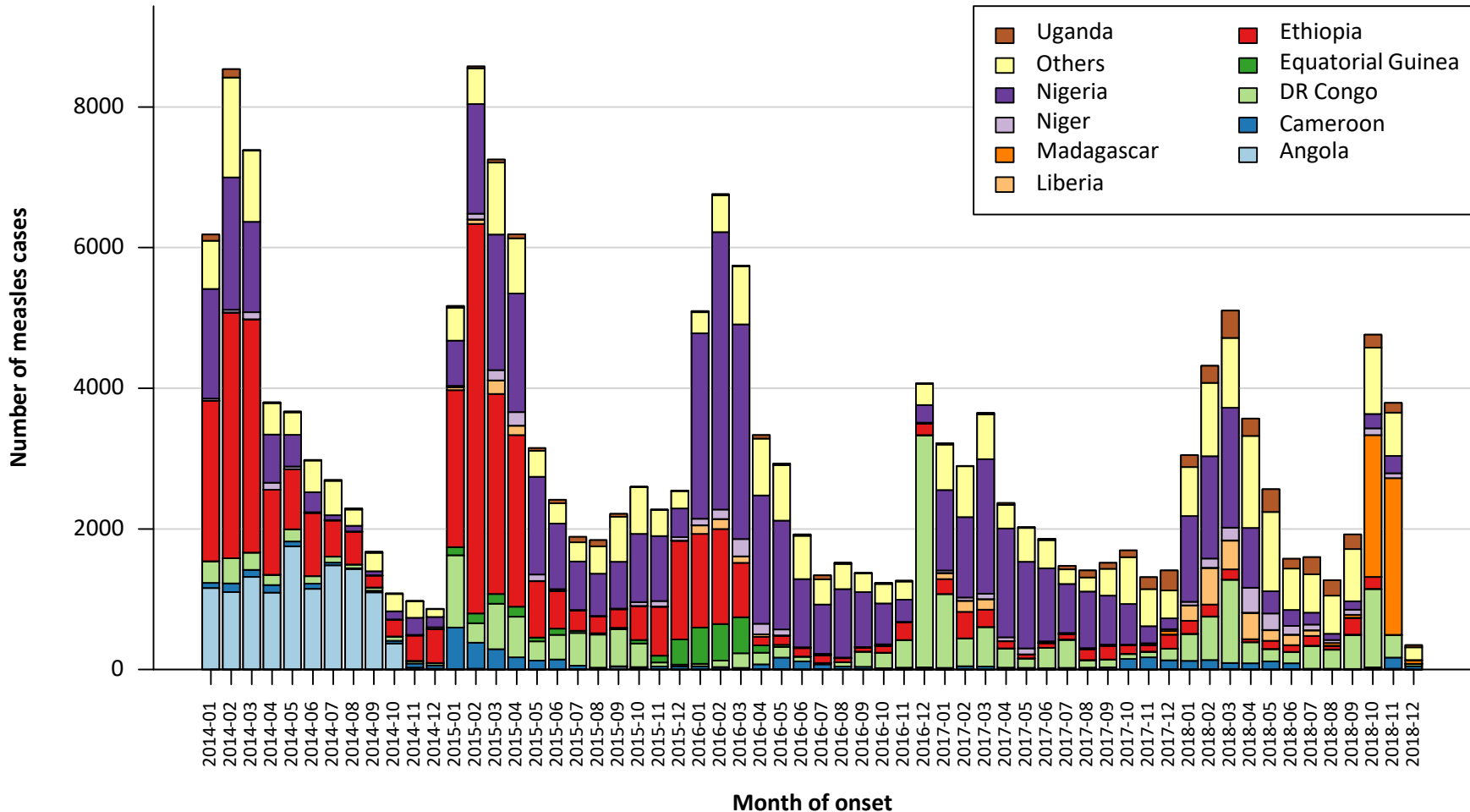
Top 10*	
Country	Cases
Ukraine	16932
India	14926
Brazil	9669
Philippines	5936
Madagascar	4327
Thailand	3576
Yemen	3310
DR Congo	2672
Sudan	2591
Malaysia	1508



Disclaimer:

The boundaries and names shown and the designations used on this map do not imply the expression of any opinion whatsoever on the part of the World Health Organization concerning the legal status of any country, territory, city or area or of its authorities, or concerning the delimitation of its frontiers or boundaries. Dotted and dashed lines on maps represent approximate border lines for which there may not yet be full agreement.

Measles case distribution (AFR), 2014-2018



Notes: Based on data received 2019-01 - Data Source: IVB Database

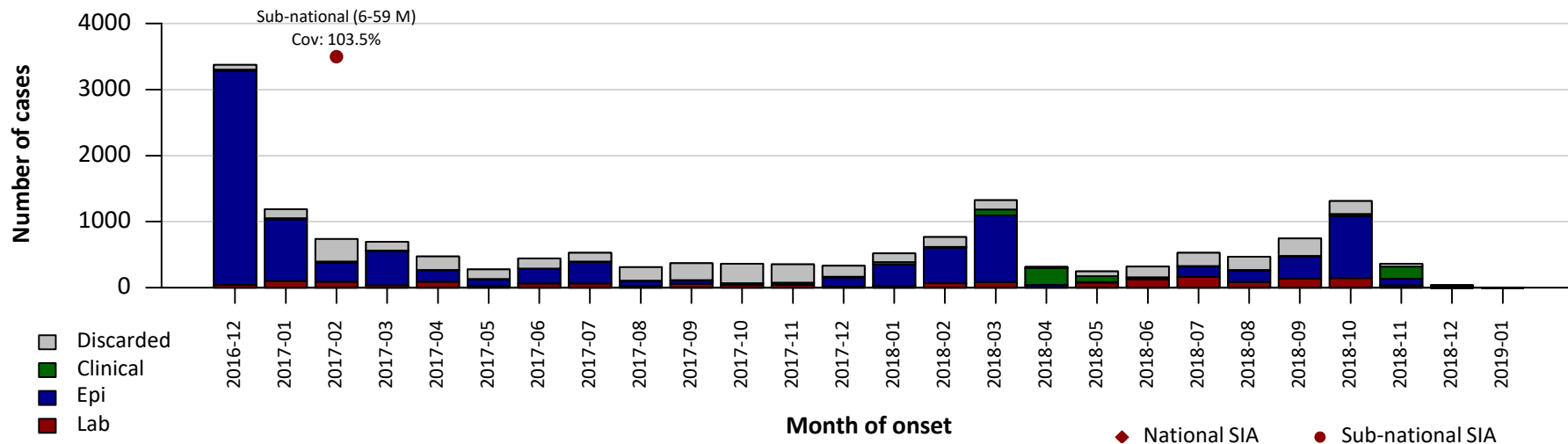
DRC has experienced a nationwide epidemic that has affected all Provinces, however, only a small proportion of the measles cases in the IDSR aggregate reporting system are reflected in the case based data. As of 27 May 2013, South Sudan has reassigned to the Africa region (AFR) from the Eastern Mediterranean region (EMR). For data presentation and statistical purposes, South Sudan data is presented in AFR for all the years

Disclaimer

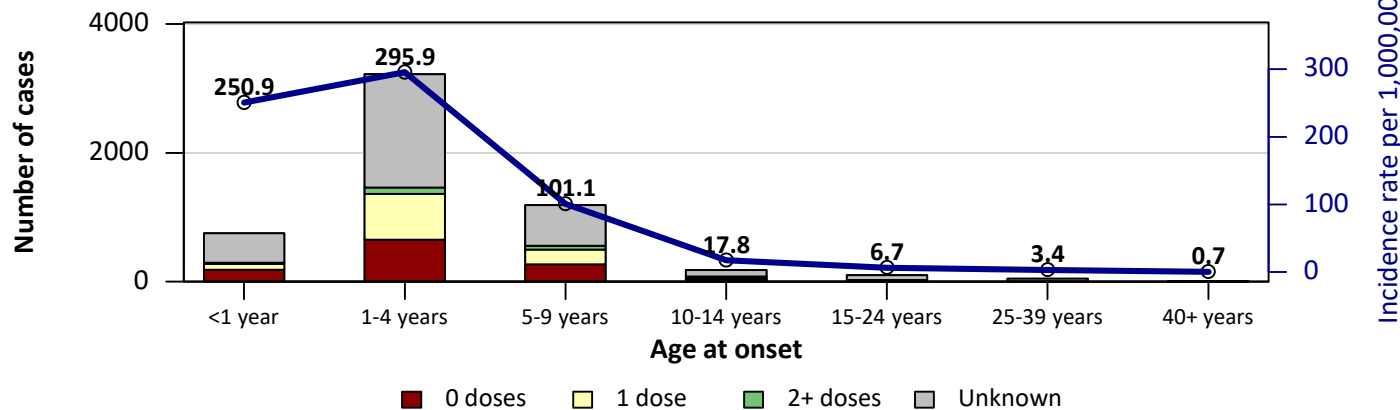
This document contains data provided to WHO by member states. Note that some member states only provide aggregate data to WHO, and for these, we are unable to generate a country profile. Some member states report all cases at one time point for the entire year, and thus epidemiologic curves generated are not accurate and a reporting artifact. For some countries, cases are reported by age category, not by exact age in months and/or years. Thus, age distribution/incidence is approximate. Cases classified as pending by countries are classified at WHO as clinically compatible at this time, and thus numbers might differ between data shown here and provided by the member state or WHO country/regional offices.

*UN population data is used as the denominator for calculating incidence.

Measles cases: Democratic Republic of the Congo

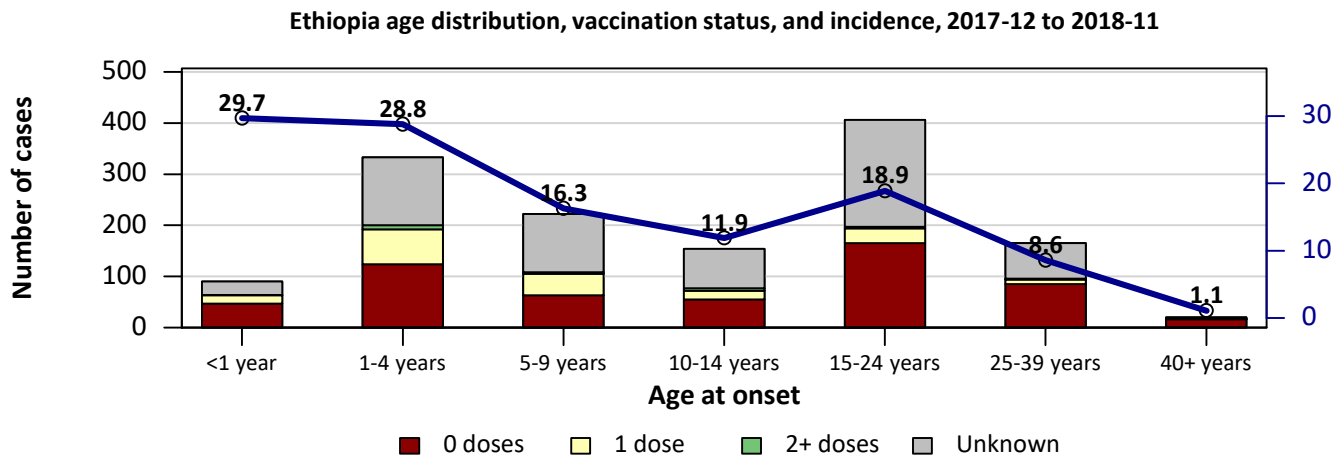
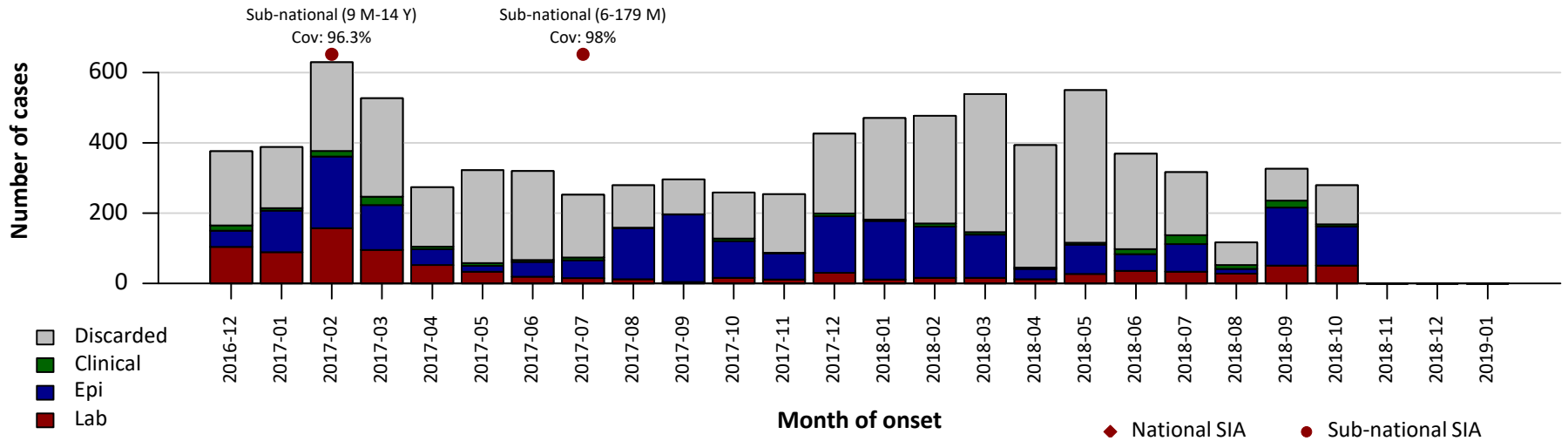


Democratic Republic of the Congo age distribution, vaccination status, and incidence, 2017-12 to 2018-11



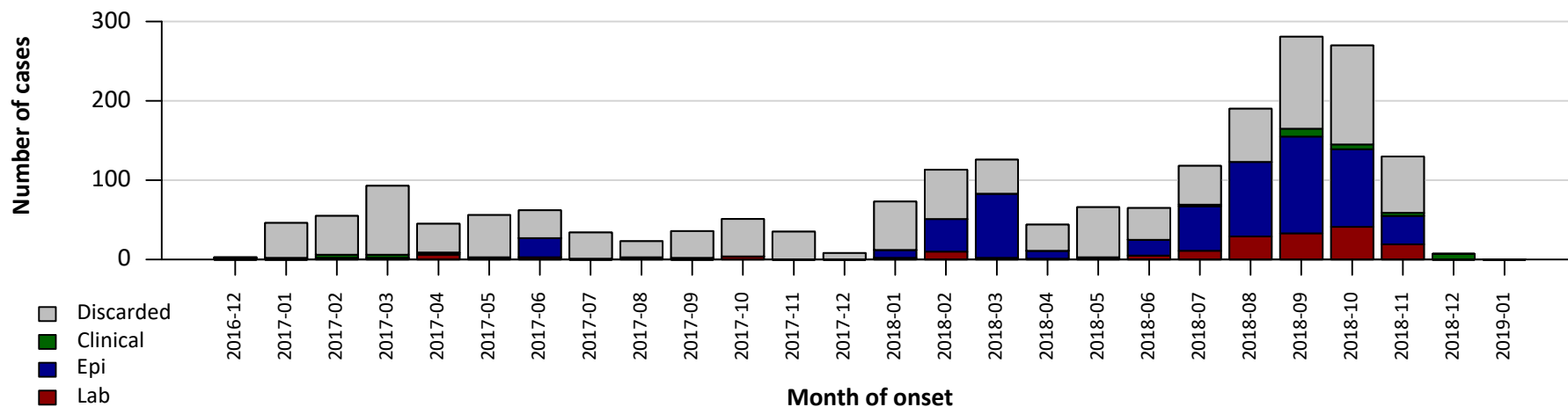
Year	Confirmed Cases
2006	1012
2007	539
2008	214
2009	83
2010	208
2011	1651
2012	2332
2013	2527
2014	1649
2015	5029
2016	4932
2017	3629
2018	5366

Measles cases: Ethiopia

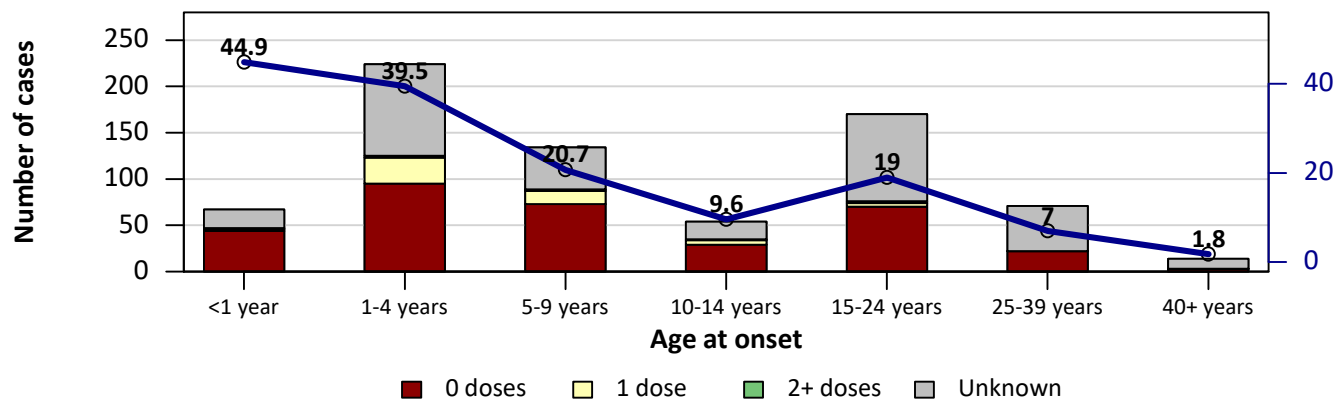


Year	Confirmed Cases
2006	1278
2007	1472
2008	3161
2009	2642
2010	6205
2011	3552
2012	4616
2013	6137
2014	14282
2015	17778
2016	4568
2017	1912
2018	1351

Measles cases: Kenya



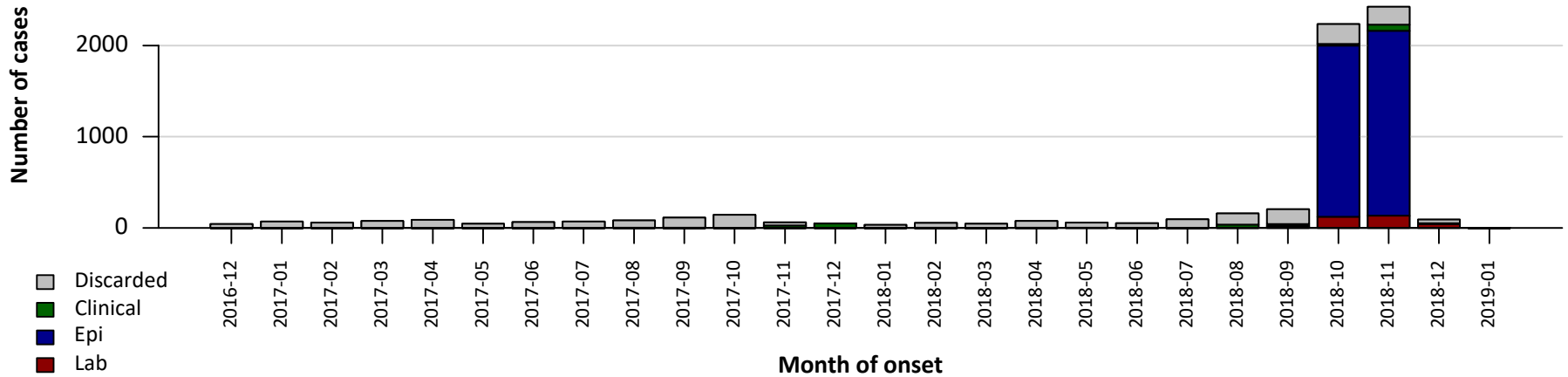
Kenya age distribution, vaccination status, and incidence, 2017-12 to 2018-11



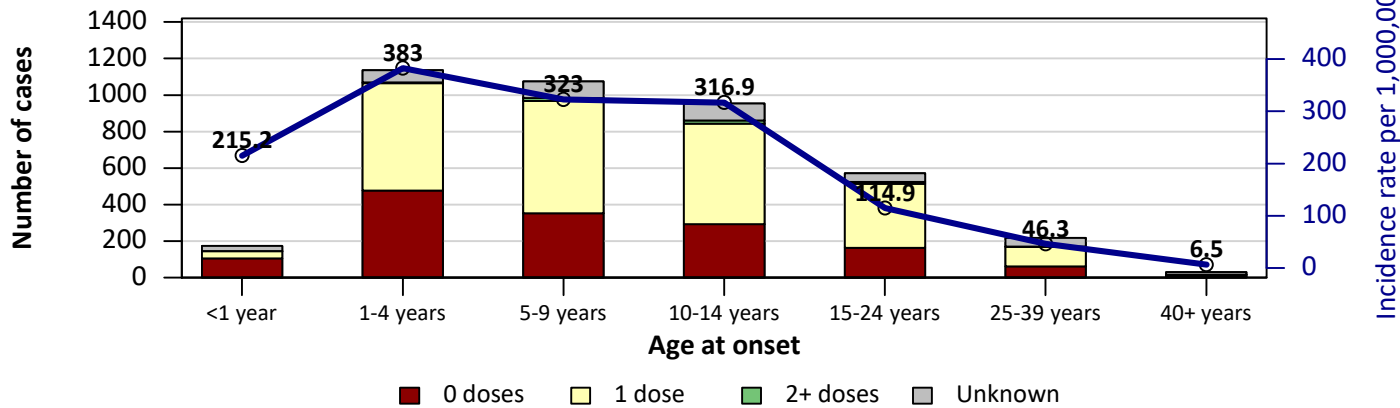
Incidence rate per 1,000,000

Year	Confirmed Cases
2006	2350
2007	486
2008	34
2009	65
2010	105
2011	2462
2012	2380
2013	243
2014	390
2015	112
2016	124
2017	63
2018	753

Measles cases: Madagascar

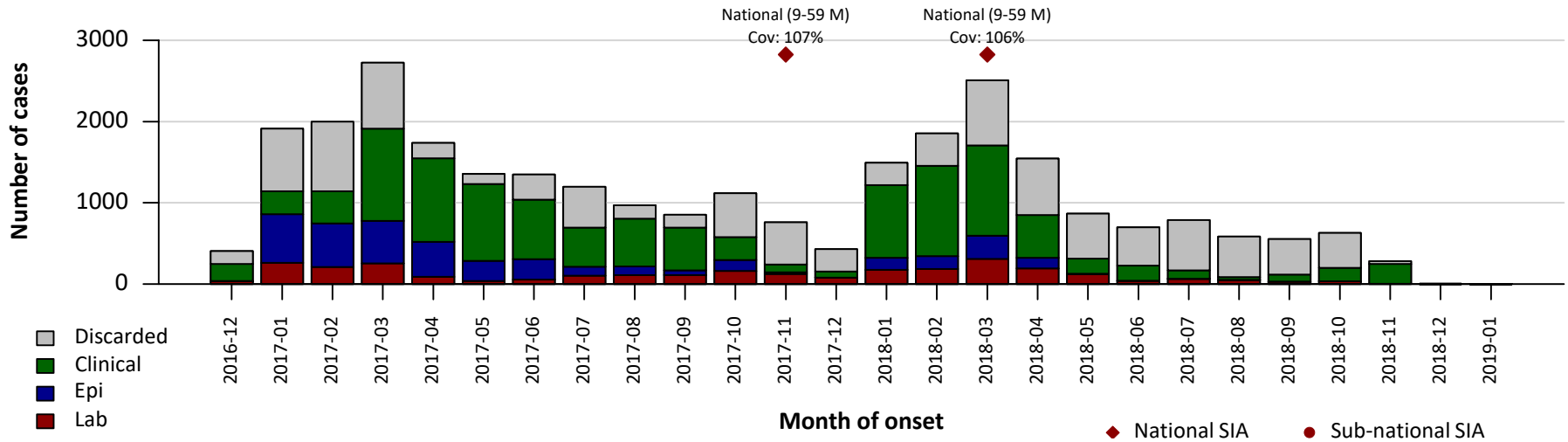


Madagascar age distribution, vaccination status, and incidence, 2017-12 to 2018-11

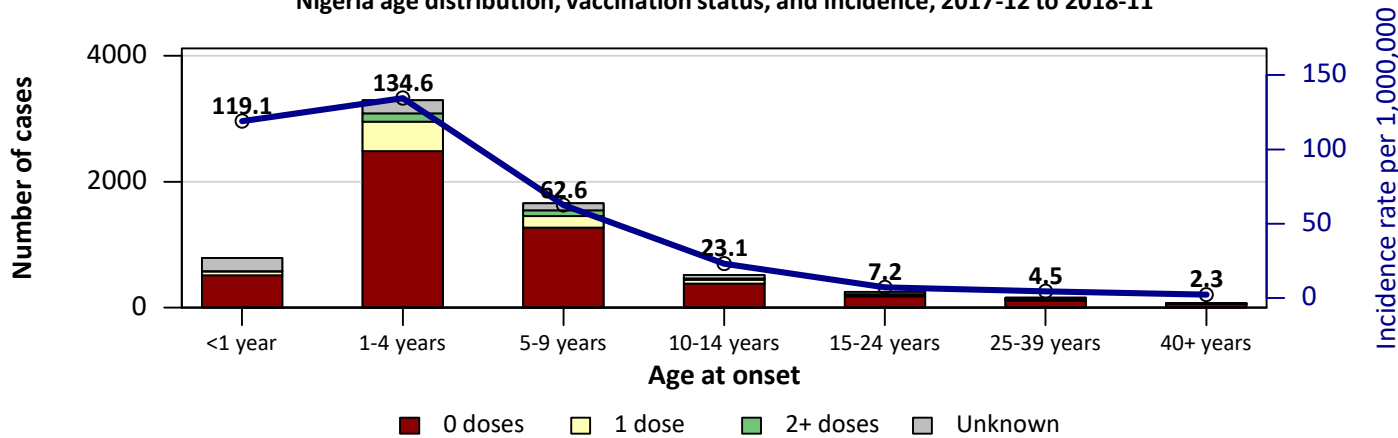


Year	Confirmed Cases
2006	2
2007	0
2008	12
2009	2
2010	1
2011	1
2012	3
2013	7
2014	1
2015	6
2016	17
2017	84
2018	4391

Measles cases: Nigeria



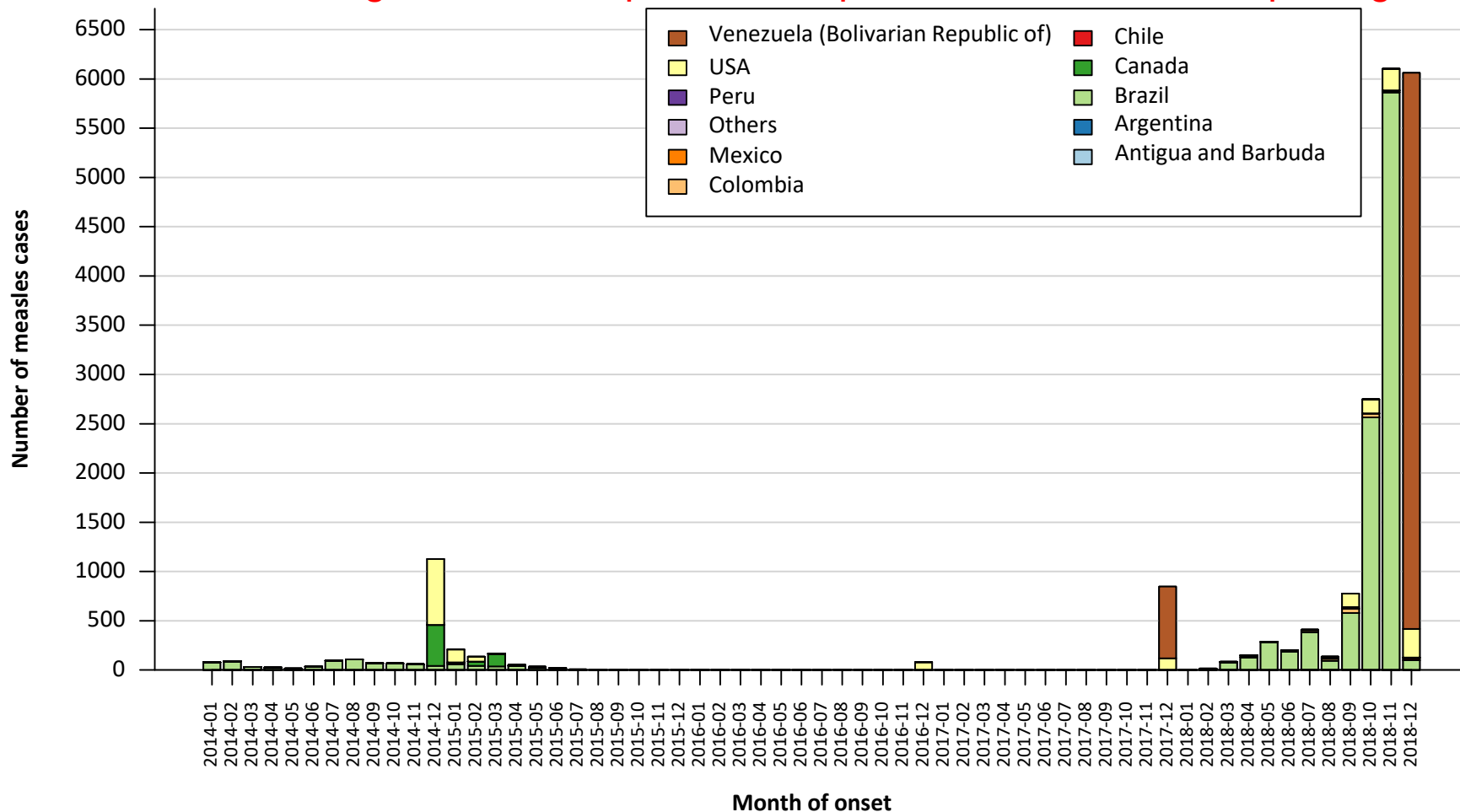
Nigeria age distribution, vaccination status, and incidence, 2017-12 to 2018-11



Year	Confirmed Cases
2006	1019
2007	3129
2008	10453
2009	1498
2010	9072
2011	19062
2012	6423
2013	55392
2014	6850
2015	12391
2016	17581
2017	11188
2018	6593

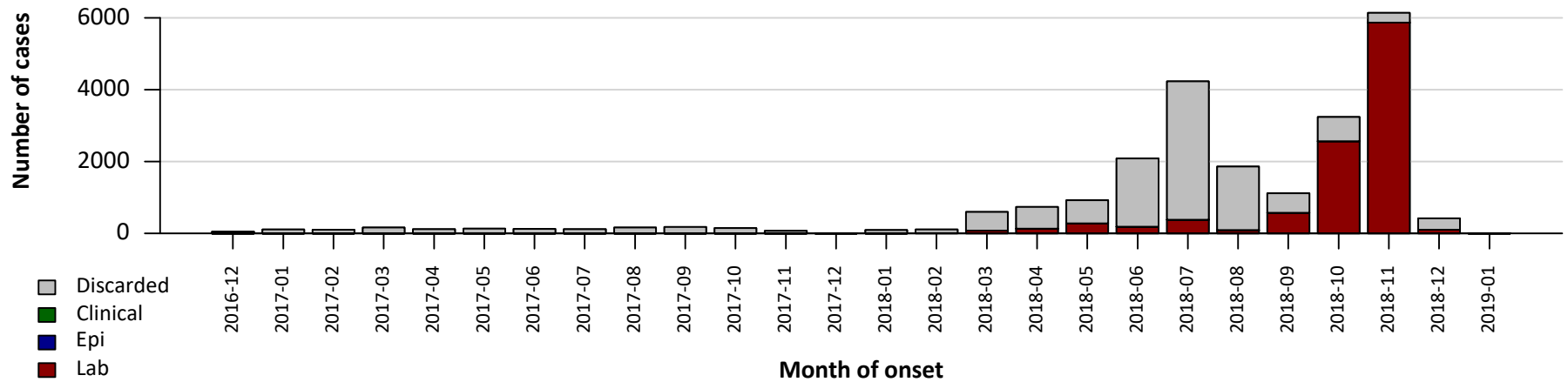
Measles case distribution (AMR), 2014-2018

The clustering of cases at specific time points is an artifact of reporting



Notes: Based on data received 2019-01 - Data Source: IVB Database

Measles cases: Brazil

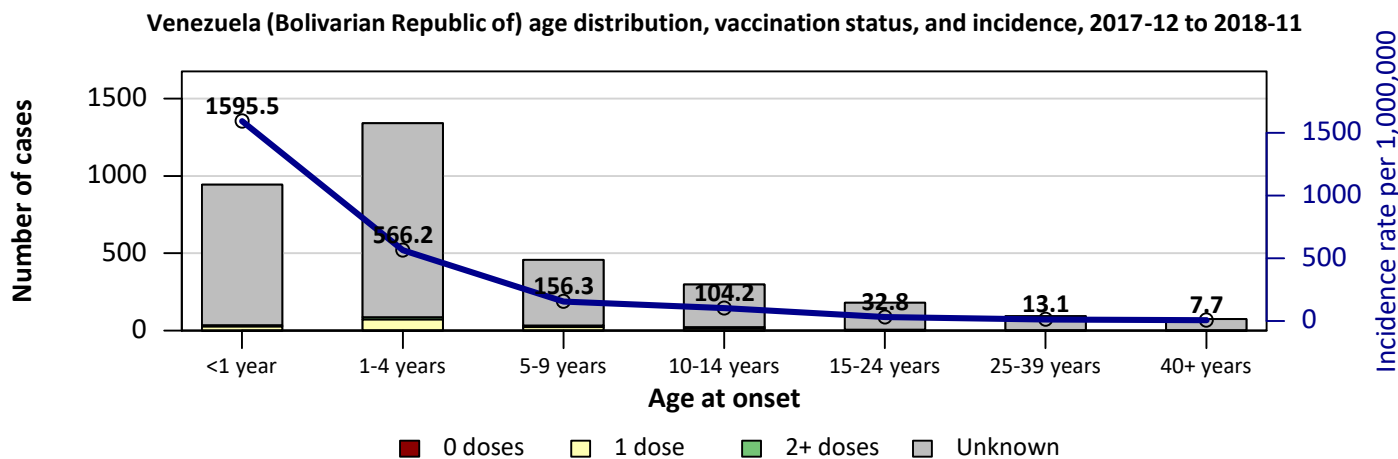
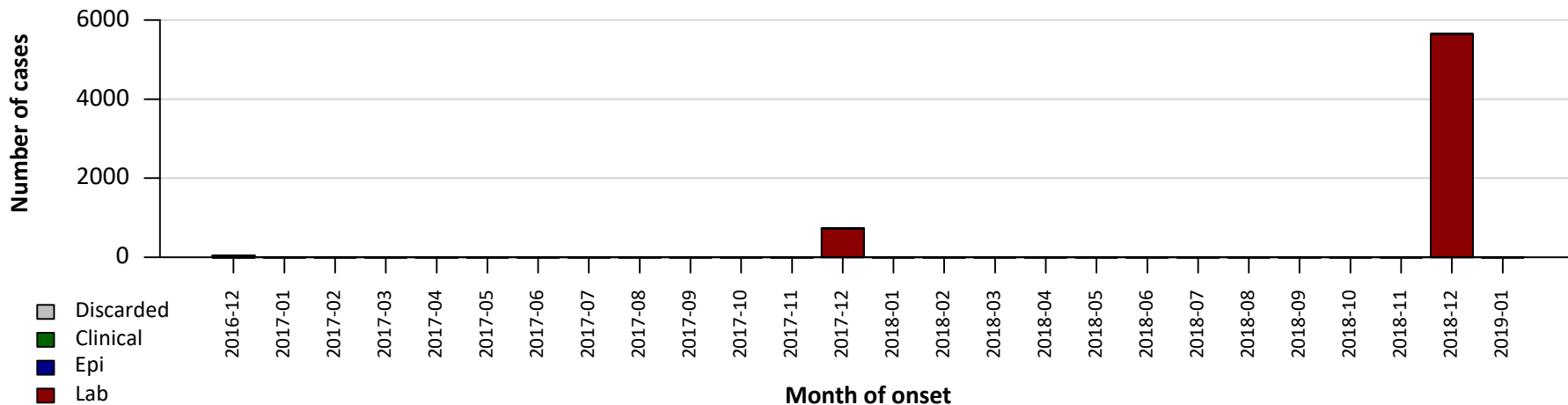


Year	Confirmed Cases
2008	0
2009	0
2010	68
2012	2
2013	192
2014	708
2015	214
2016	0
2017	0
2018	10262

Measles cases: Venezuela (Bolivarian Republic of)

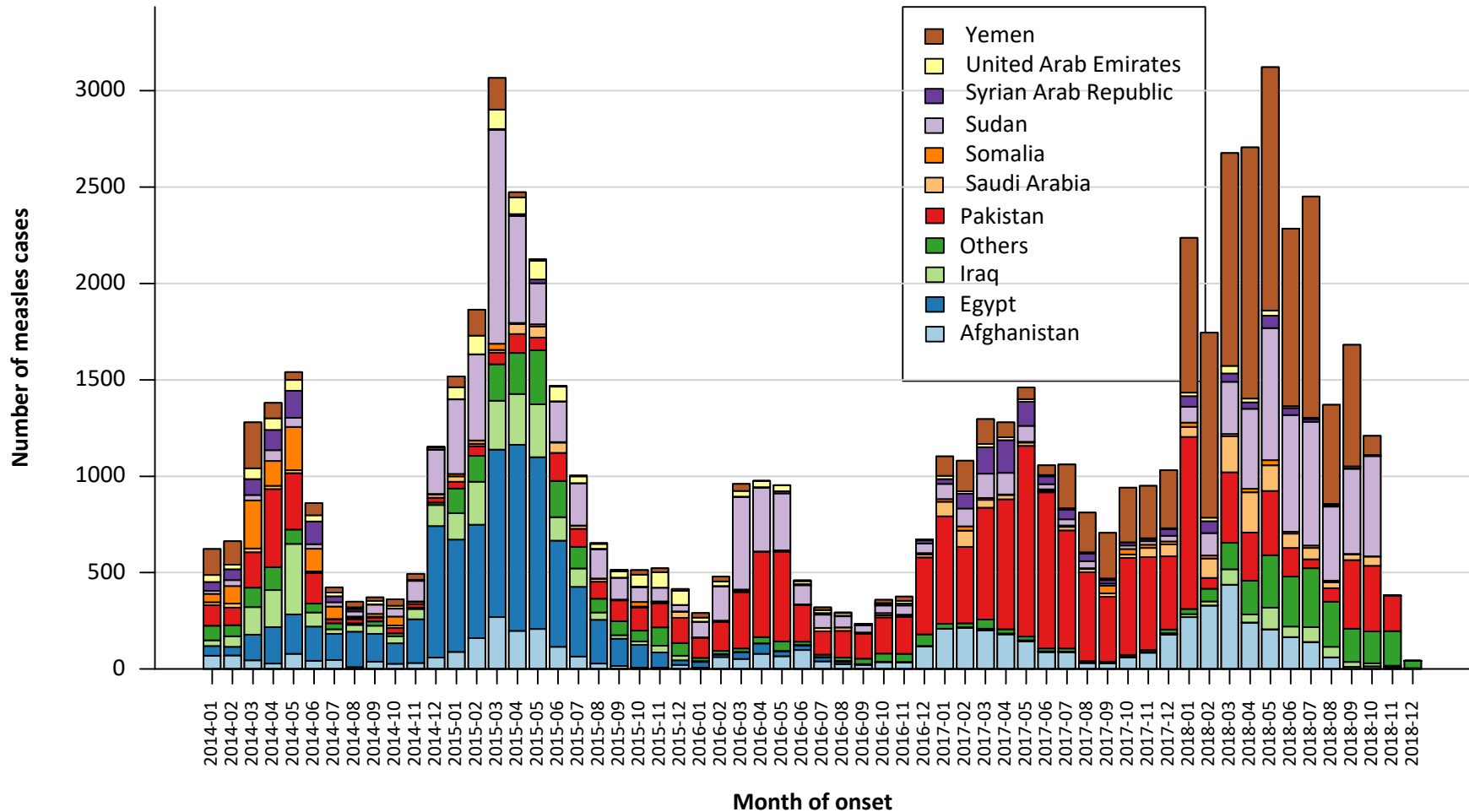


The clustering of cases at specific time points is an artifact of reporting



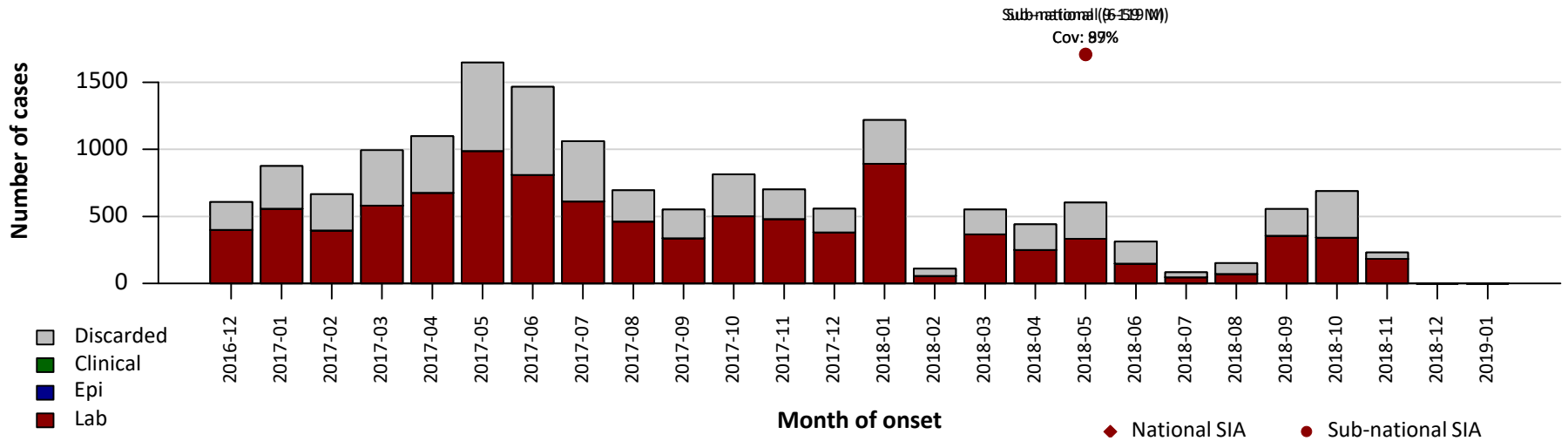
Year	Confirmed Cases
2008	0
2009	0
2010	0
2011	0
2012	1
2013	0
2014	0
2015	0
2016	1
2017	727
2018	5643

Measles case distribution (EMR), 2014-2018

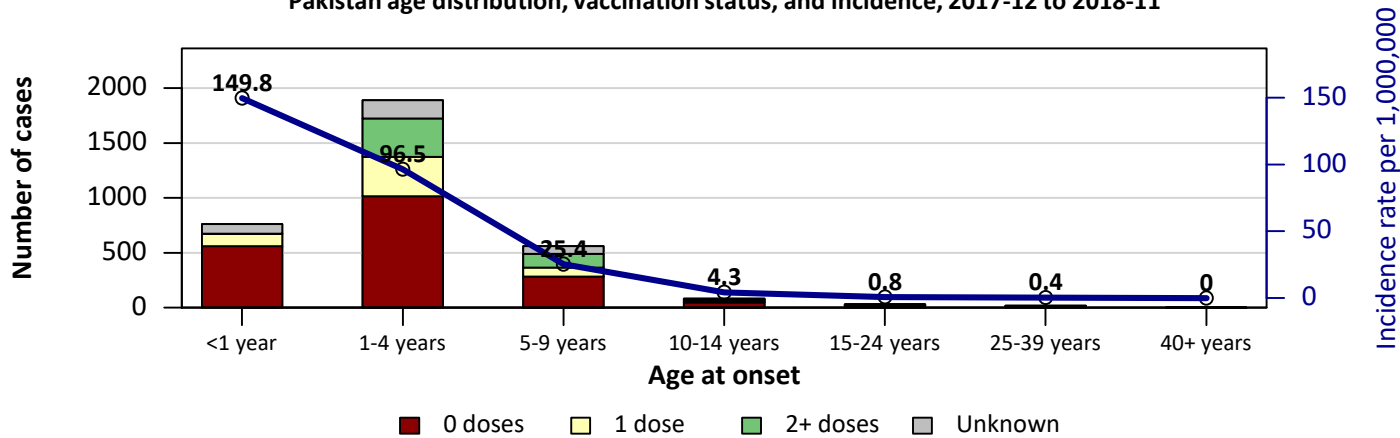


Notes: Based on data received 2019-01 - Data Source: IVB Database

Measles cases: Pakistan

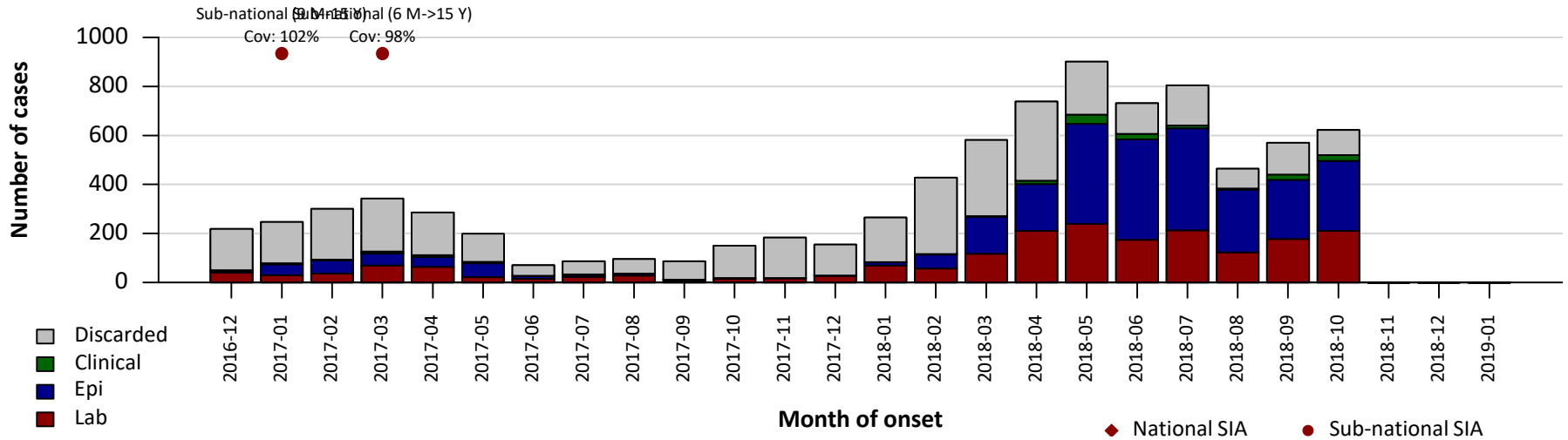


Pakistan age distribution, vaccination status, and incidence, 2017-12 to 2018-11

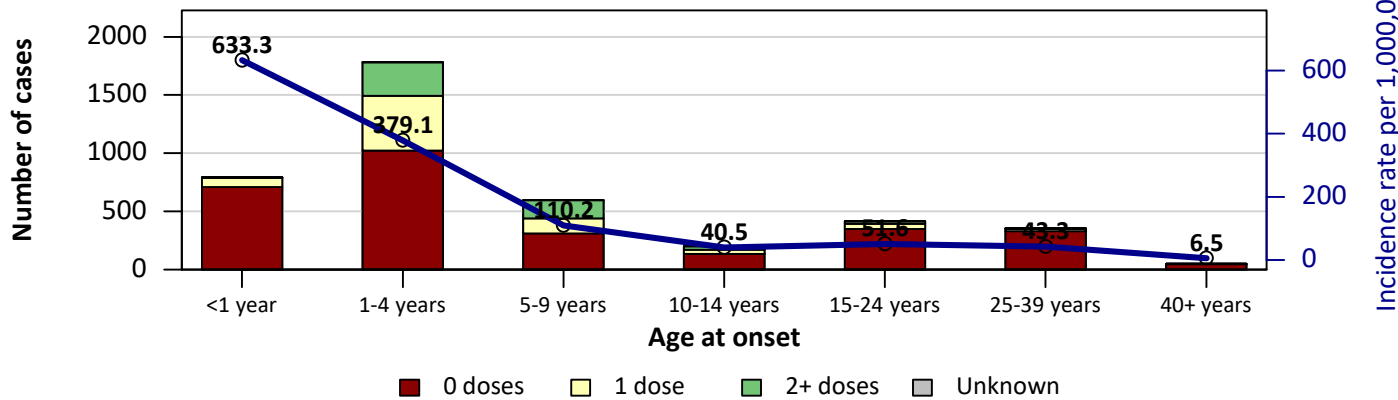


Year	Confirmed Cases
2006	35
2007	33
2008	53
2009	472
2010	1111
2011	2676
2012	8048
2013	8030
2014	1370
2015	1117
2016	2806
2017	6780
2018	3041

Measles cases: Sudan

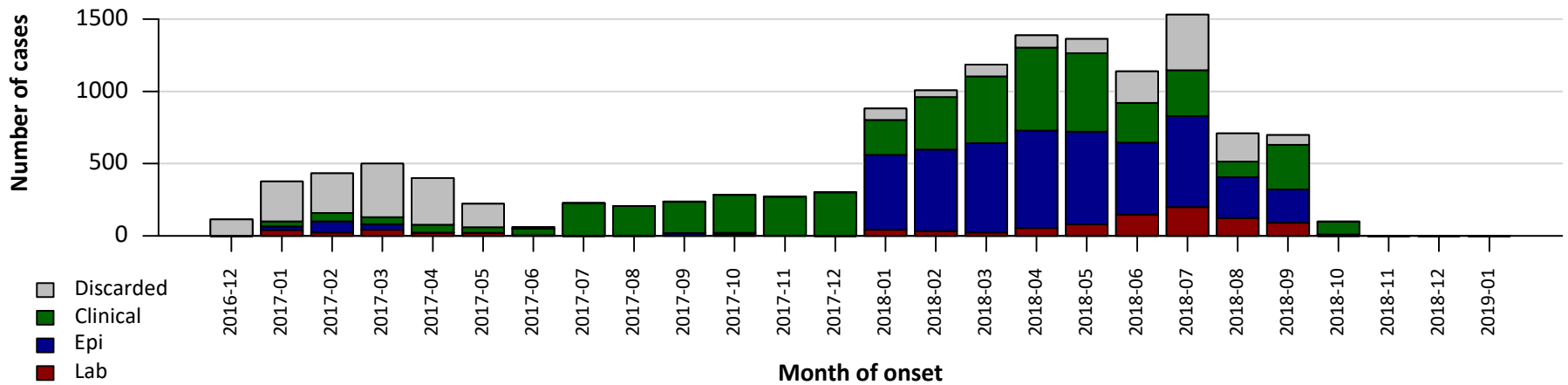


Sudan age distribution, vaccination status, and incidence, 2017-12 to 2018-11

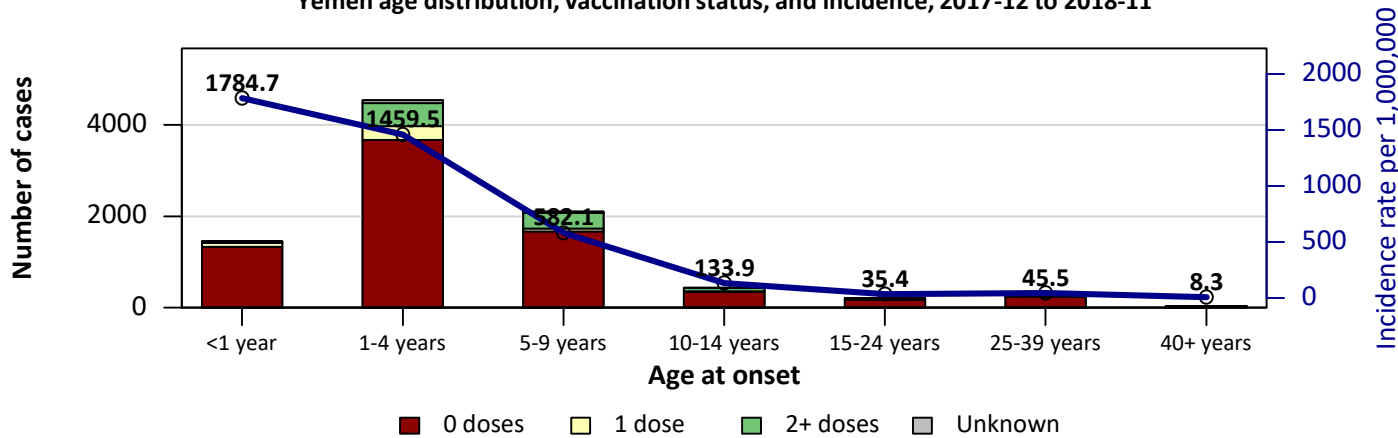


Year	Confirmed Cases
2006	274
2007	483
2008	97
2009	68
2010	613
2011	5616
2012	8521
2013	2811
2014	676
2015	3585
2016	1767
2017	665
2018	4161

Measles cases: Yemen

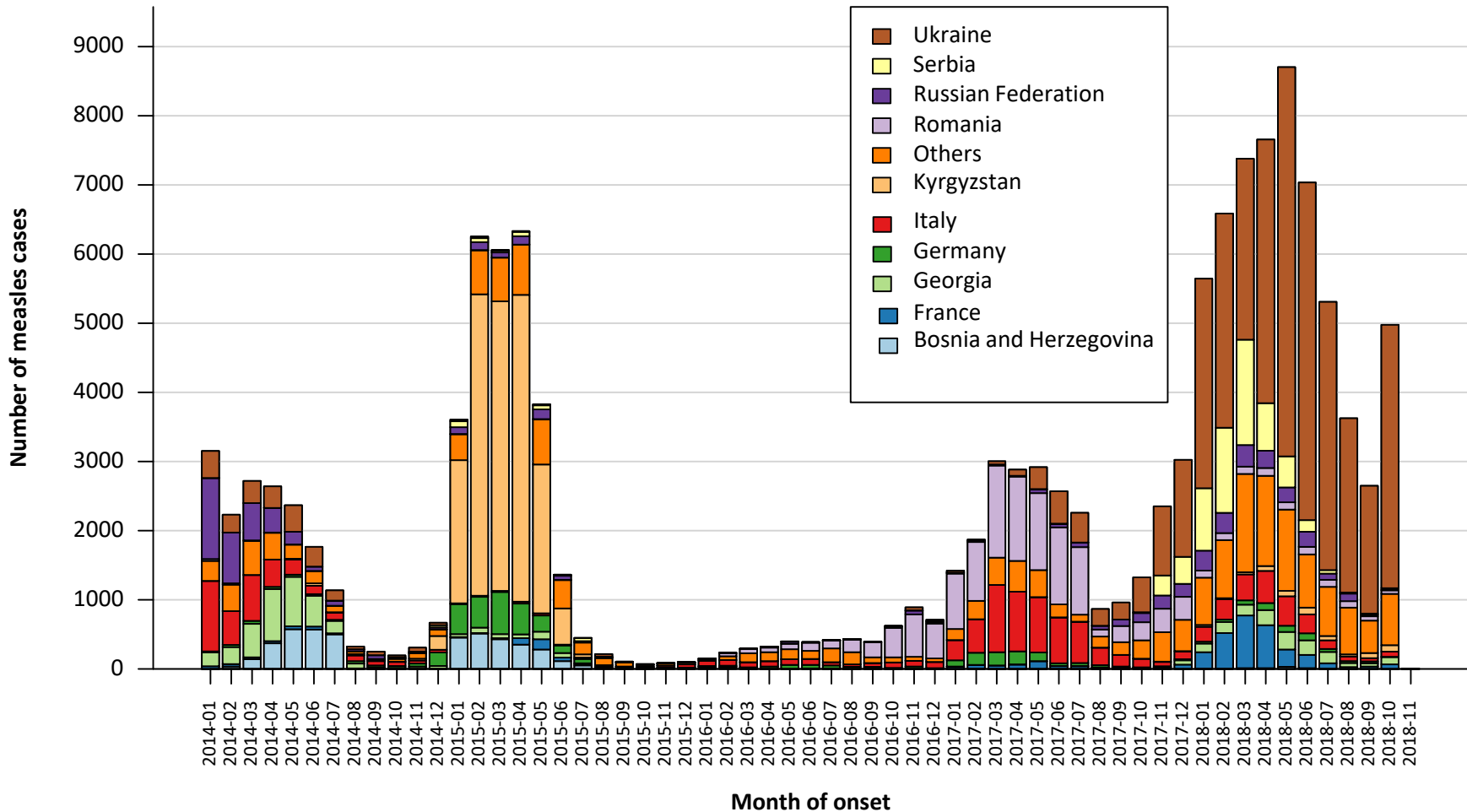


Yemen age distribution, vaccination status, and incidence, 2017-12 to 2018-11



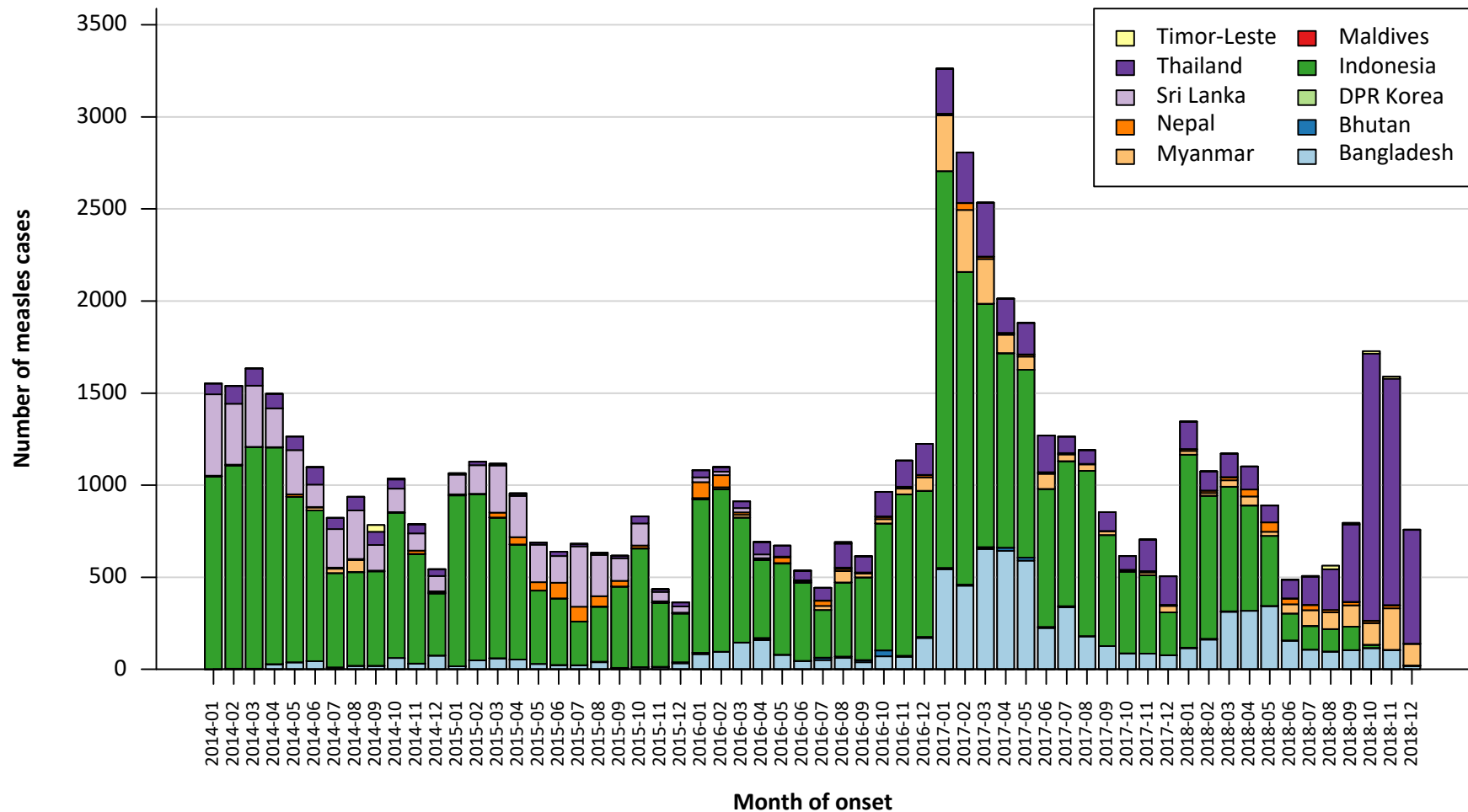
Year	Confirmed Cases
2006	4989
2007	50
2008	53
2009	127
2010	372
2011	847
2012	2143
2013	571
2014	817
2015	465
2016	143
2017	2101
2018	8742

Measles case distribution (EUR), 2014-2018



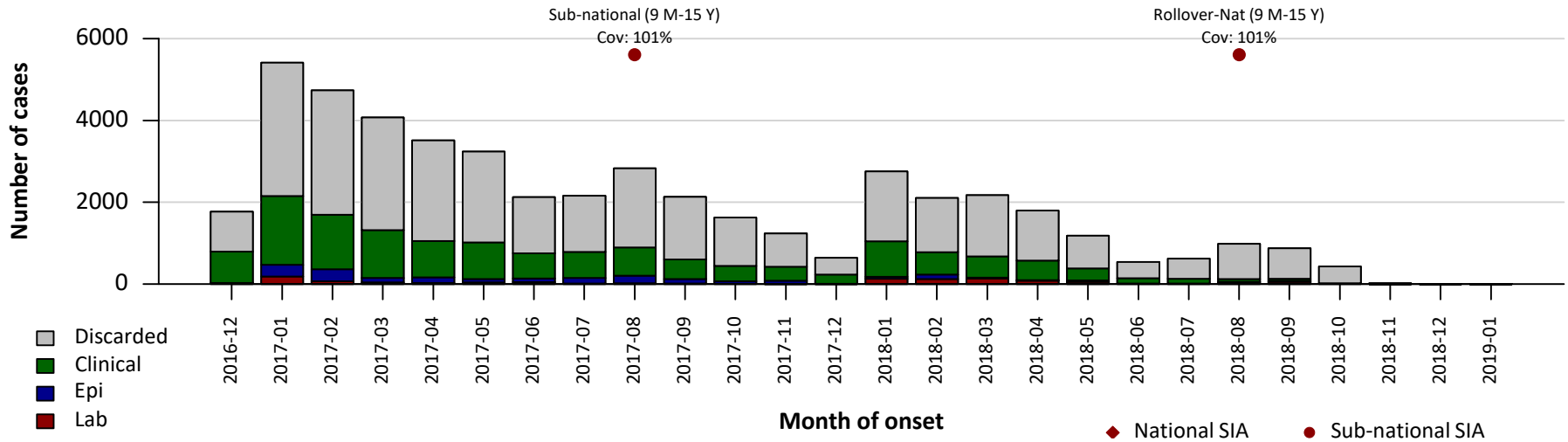
Notes: Based on data received 2018-12 - Data Source: IVB Database

Measles case distribution (SEAR (excl. India)), 2014-2018

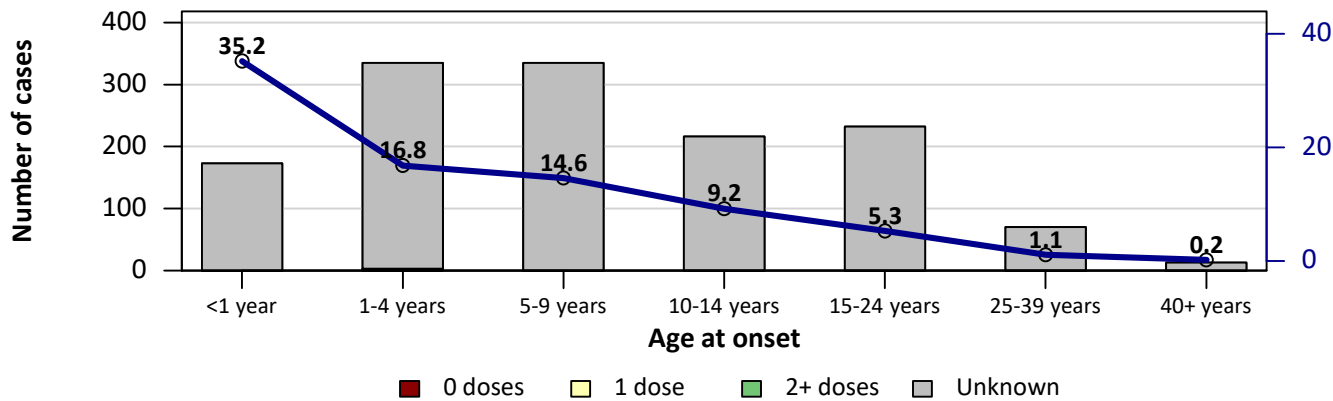


Notes: Based on data received 2019-01 - Data Source: IVB Database

Measles cases: Indonesia

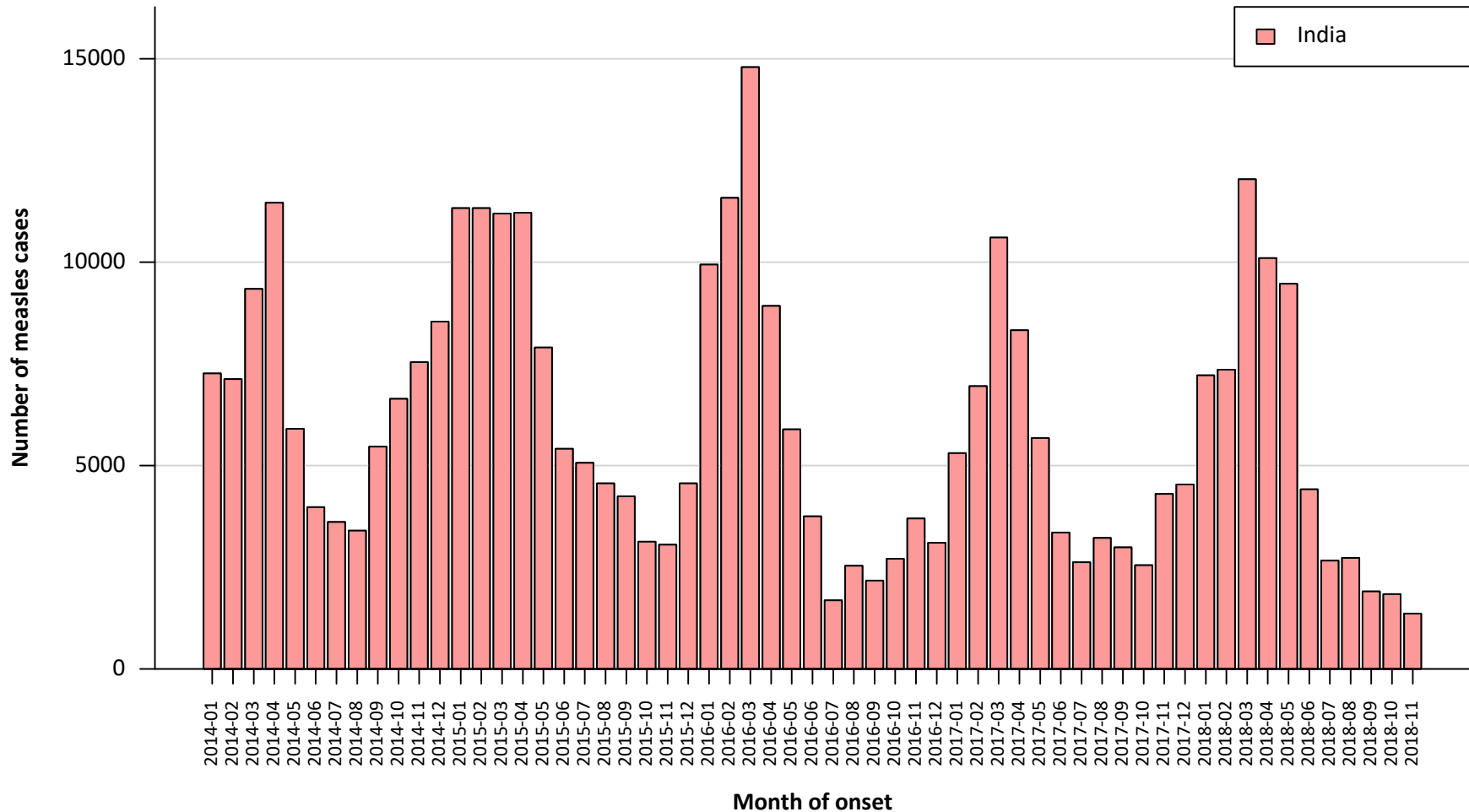


Indonesia age distribution, vaccination status, and incidence, 2017-12 to 2018-11



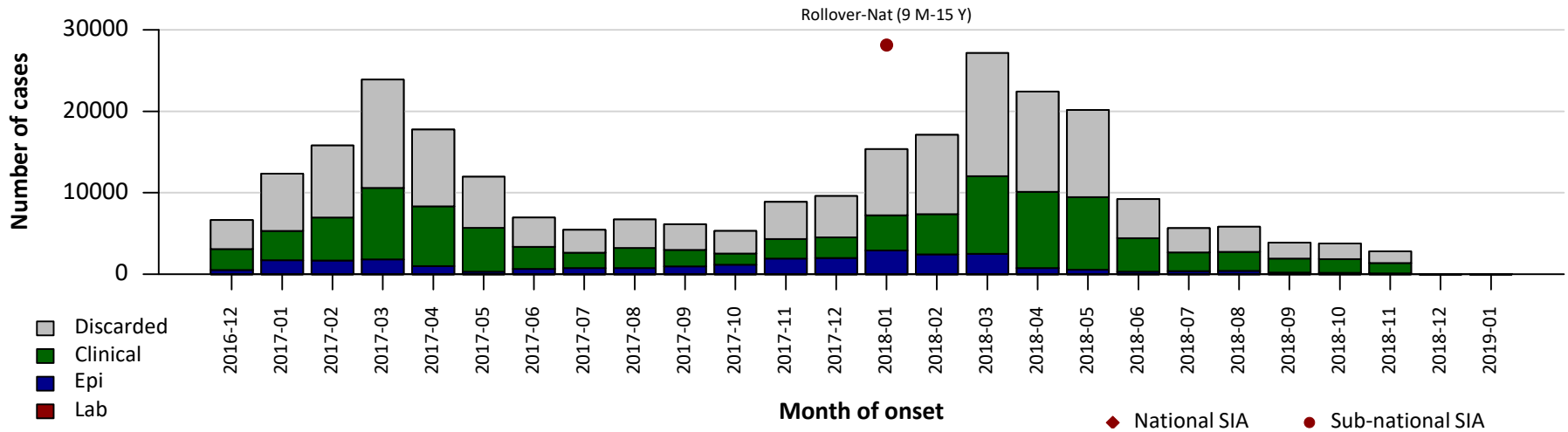
Year	Confirmed Cases
2006	21911
2007	20837
2008	16417
2009	21008
2010	23471
2011	23510
2012	16786
2013	10093
2014	9498
2015	6209
2016	7204
2017	11389
2018	3995

Measles case distribution (SEAR, India), 2014-2018

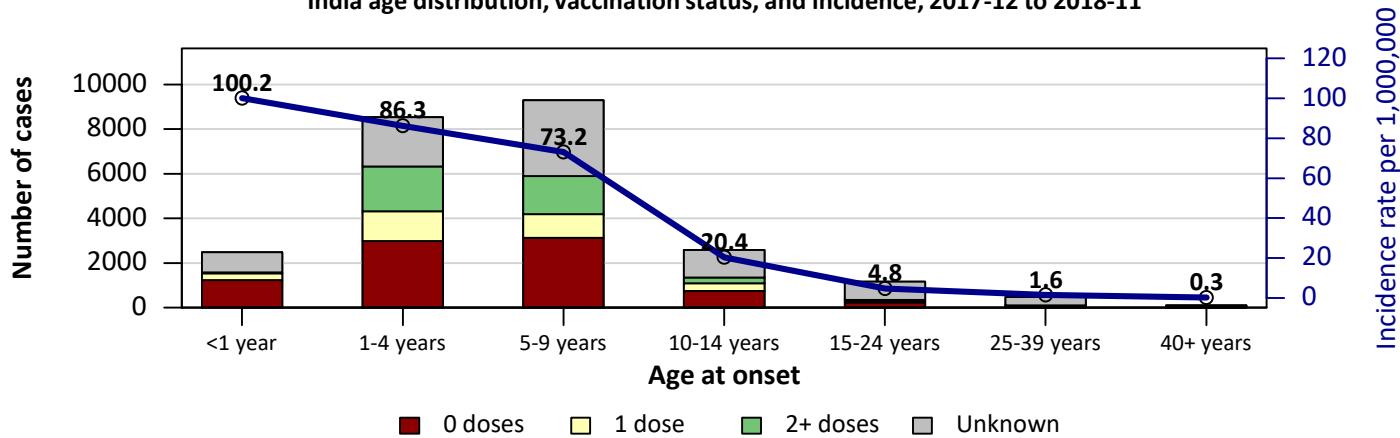


Notes: Based on data received 2019-01 - Data Source: IVB Database

Measles cases: India

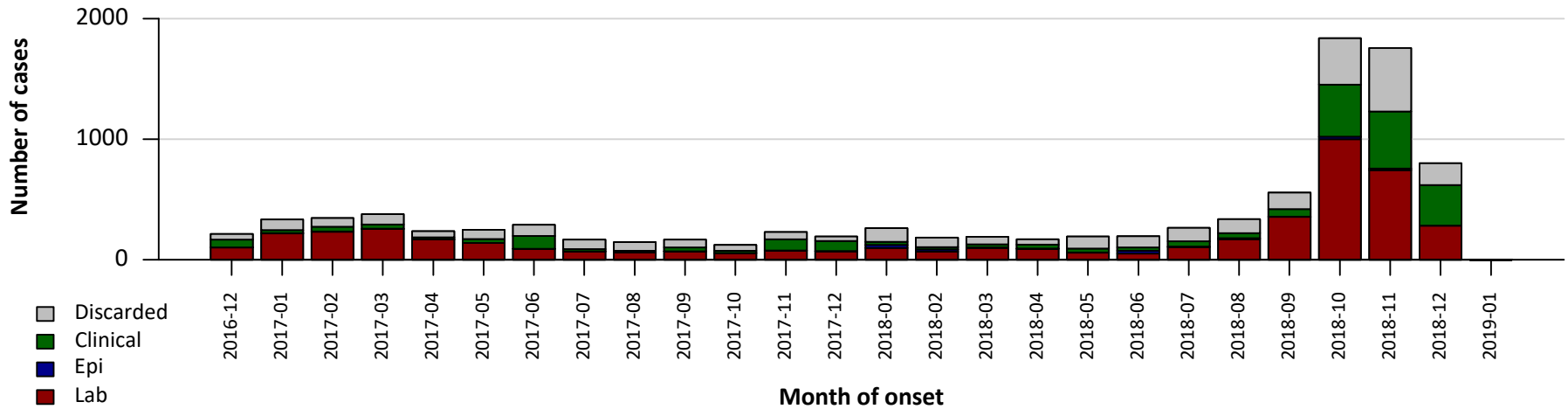


India age distribution, vaccination status, and incidence, 2017-12 to 2018-11

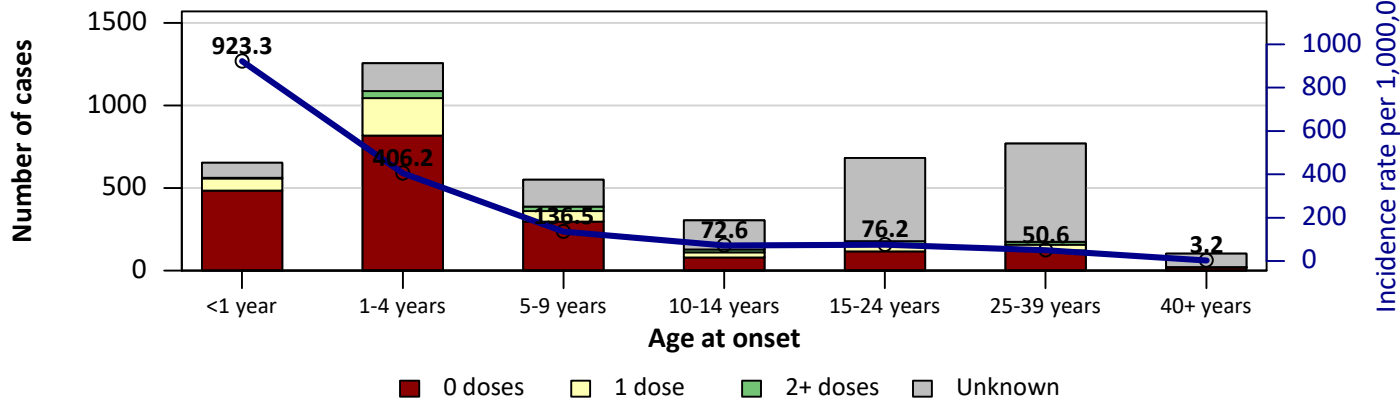


Year	Confirmed Cases
2014	80306
2015	83026
2016	70798
2017	60468
2018	61120

Measles cases: Thailand

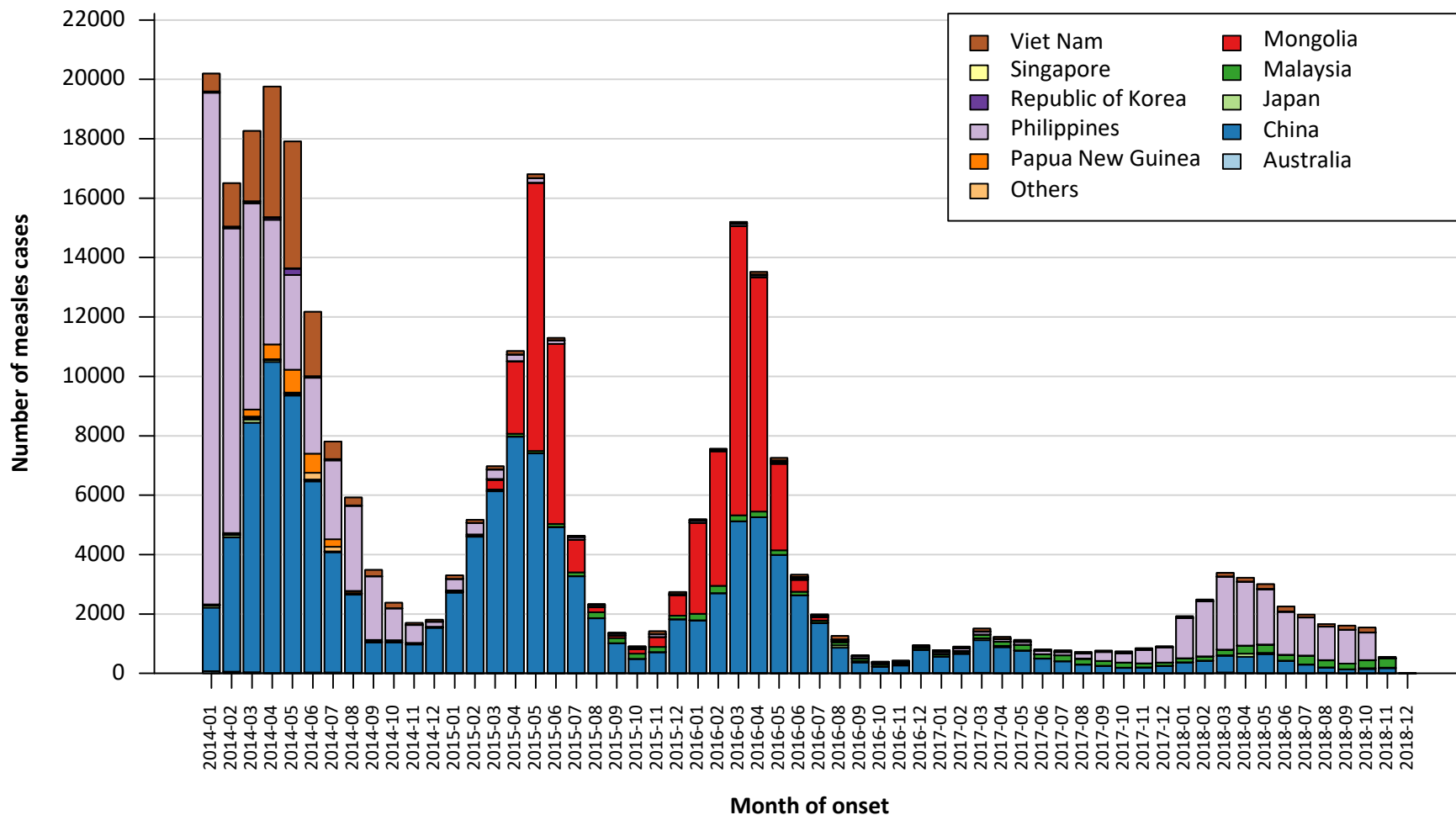


Thailand age distribution, vaccination status, and incidence, 2017-12 to 2018-11



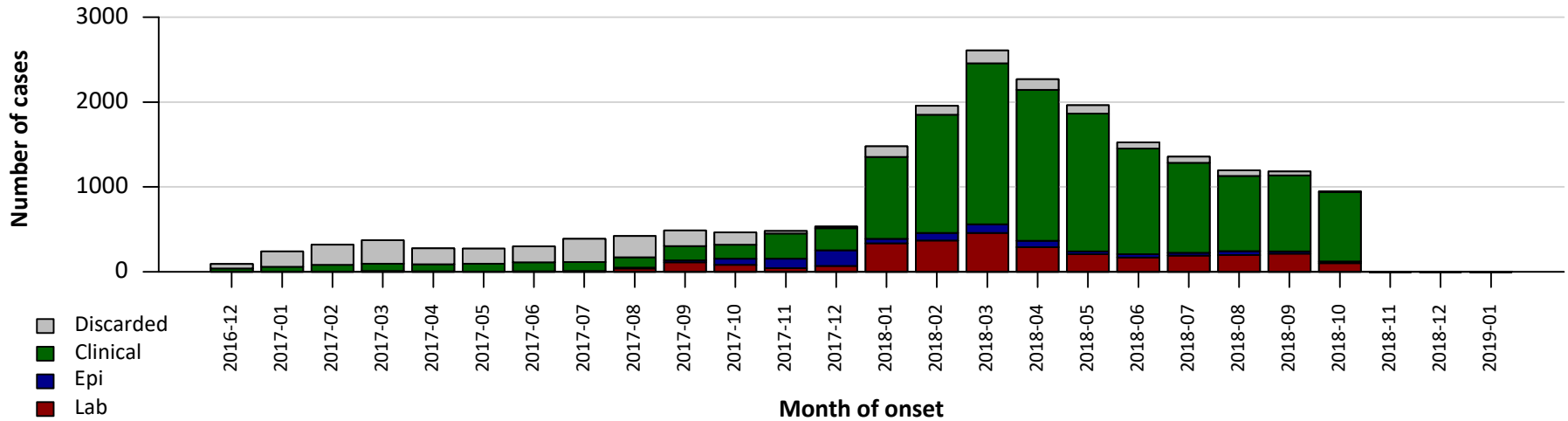
Year	Confirmed Cases
2006	3962
2007	3517
2008	6339
2009	5272
2010	2273
2011	2873
2012	4072
2013	2056
2014	834
2015	190
2016	1009
2017	2033
2018	4791

Measles case distribution (WPR), 2014-2018

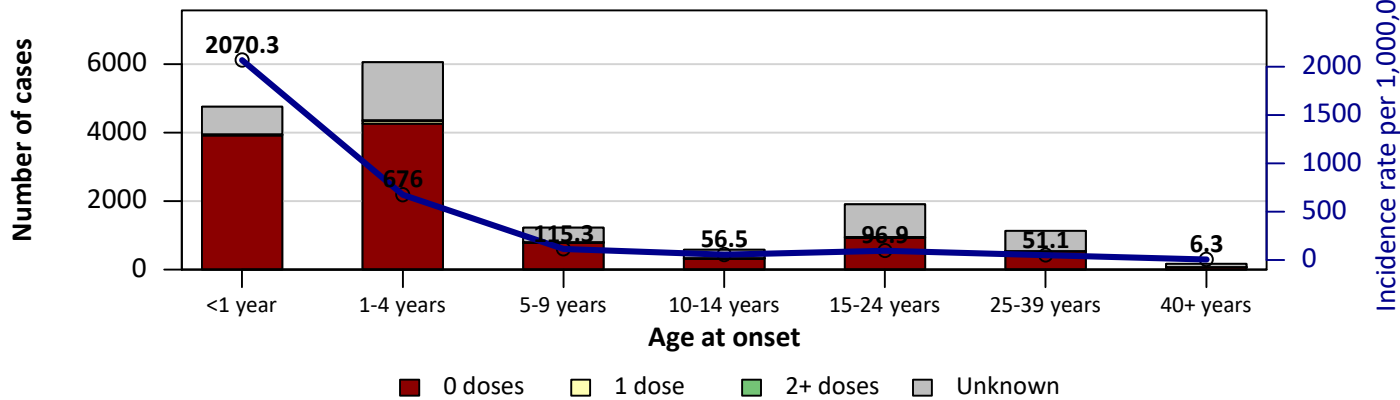


Notes: Based on data received 2019-01 - Data Source: IVB Database

Measles cases: Philippines

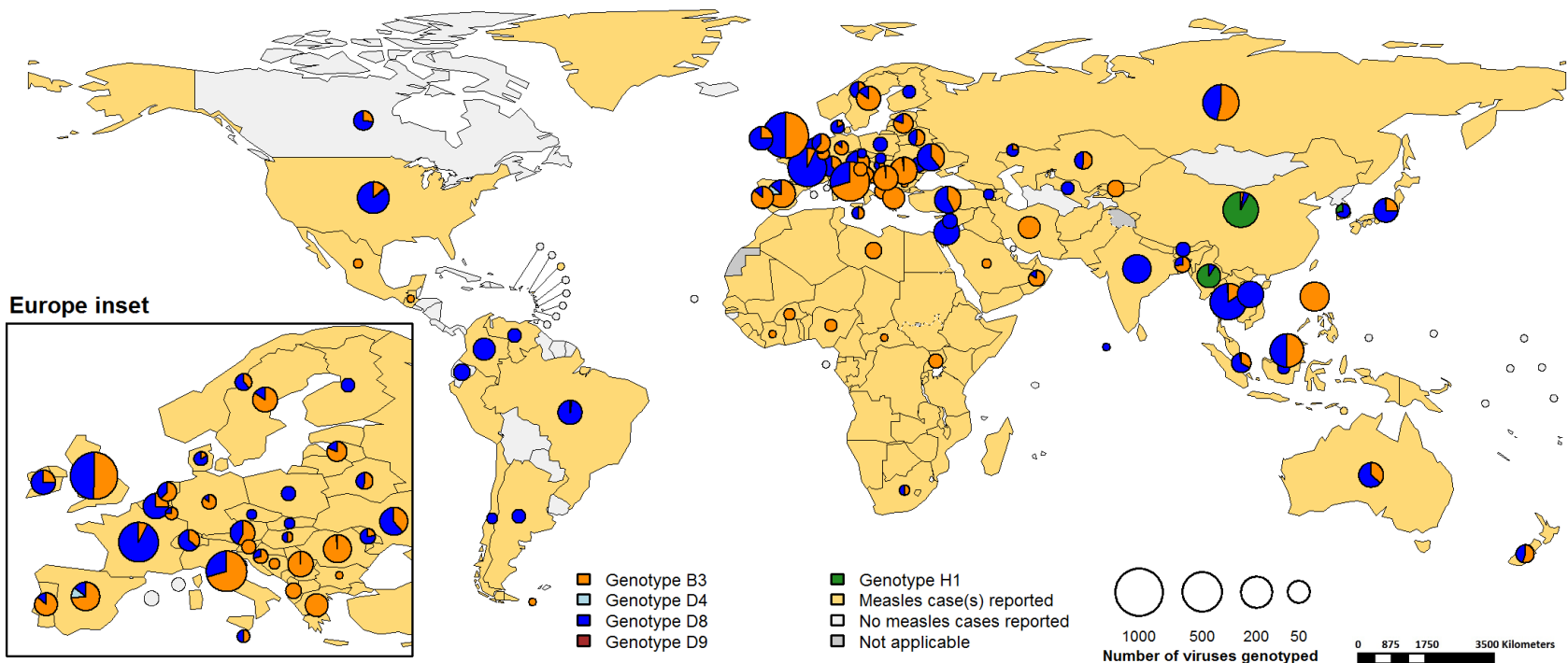


Philippines age distribution, vaccination status, and incidence, 2017-12 to 2018-11



Year	Confirmed Cases
2006	216
2007	612
2008	838
2009	1351
2010	6363
2011	6519
2012	1441
2013	4855
2014	53906
2015	2021
2016	647
2017	2407
2018	15599

Distribution of measles genotypes (last 12 months)



Disclaimer:

The boundaries and names shown and the designations used on this map do not imply the expression of any opinion whatsoever on the part of the World Health Organization concerning the legal status of any country, territory, city or area or of its authorities, or concerning the delimitation of its frontiers or boundaries. Dotted and dashed lines on maps represent approximate border lines for which there may not yet be full agreement.

Notes: Data Source: MeaNS database (Genotypes) and IVB Database (Incidence) as of 2019-01-09 and covering the period 2017-12-01 to 2018-11-30 - Pie charts proportional to the number of sequenced viruses

Rubella

Number of Reported Rubella Cases by WHO Regions



2018																		
Region	Member States*	Rubella cases	Clin	Epi	Lab	Jan	Feb	Mar	Apr	May	Jun	Jul	Aug	Sep	Oct	Nov	Dec	Date Received
AFR	42/47	3109	0	0	3109	338	368	568	357	354	257	241	210	148	160	85	23	2019-01
AMR	27/35	2	0	0	2	0	1	0	1	0	0	0	0	0	0	0	0	2019-01
EMR	20/21	1016	113	48	855	103	115	160	127	131	92	112	78	38	55	5	0	2019-01
EUR	37/53	749	662	6	81	82	96	75	96	91	78	62	77	48	44	0	0	2018-12
SEAR	11/11	2557	0	253	2304	269	352	463	435	297	148	77	160	162	123	64	7	2019-01
WPR	15/27	3543	221	65	3257	105	94	275	495	760	342	259	216	288	329	380	0	2019-01
Total	152/194	10976	996	372	9608	897	1026	1541	1511	1633	917	751	741	684	711	534	30	

2017																		
Region	Member States*	Rubella cases	Clin	Epi	Lab	Jan	Feb	Mar	Apr	May	Jun	Jul	Aug	Sep	Oct	Nov	Dec	Date Received
AFR	42/47	4569	0	0	4569	278	515	586	328	343	372	212	331	388	647	459	110	2019-01
AMR	26/35	0	0	0	0	0	0	0	0	0	0	0	0	0	0	0	0	2019-01
EMR	20/21	914	43	1	870	76	111	121	106	156	112	49	22	25	50	47	39	2019-01
EUR	30/53	703	570	17	116	59	60	87	69	85	58	54	47	38	54	46	46	2018-12
SEAR	11/11	7779	0	2275	5504	612	1156	1582	1219	817	357	329	514	344	367	253	229	2019-01
WPR	14/27	2318	258	163	1897	154	201	343	307	295	194	198	127	122	93	115	169	2019-01
Total	143/194	16283	871	2456	12956	1179	2043	2719	2029	1696	1093	842	1041	917	1211	920	593	

Notes: Based on data received 2019-01 - This is surveillance data, hence for the last month, the data may be incomplete. * Member States Reporting / Total Member States in Region

Number of Reported Rubella Cases by WHO Regions

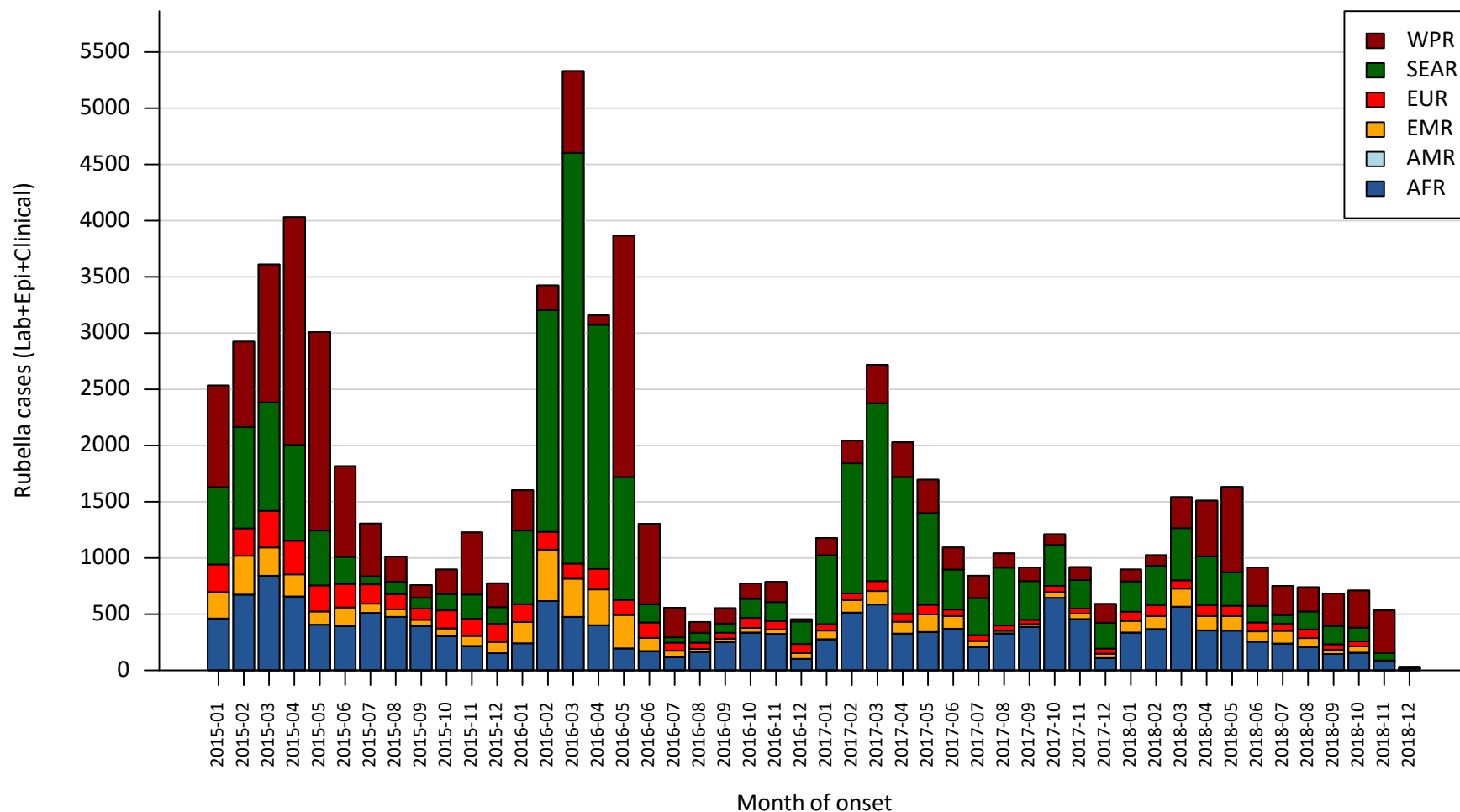


2018																		
Region	Member States*	Rubella cases	Clin	Epi	Lab	Jan	Feb	Mar	Apr	May	Jun	Jul	Aug	Sep	Oct	Nov	Dec	Date Received
AFR	42/47	3109	0	0	3109	338	368	568	357	354	257	241	210	148	160	85	23	2019-01
AMR	27/35	2	0	0	2	0	1	0	1	0	0	0	0	0	0	0	0	2019-01
EMR	20/21	1016	113	48	855	103	115	160	127	131	92	112	78	38	55	5	0	2019-01
EUR	37/53	749	662	6	81	82	96	75	96	91	78	62	77	48	44	0	0	2018-12
SEAR	11/11	2557	0	253	2304	269	352	463	435	297	148	77	160	162	123	64	7	2019-01
WPR	15/27	3543	221	65	3257	105	94	275	495	760	342	259	216	288	329	380	0	2019-01
Total	152/194	10976	996	372	9608	897	1026	1541	1511	1633	917	751	741	684	711	534	30	

2017																		
Region	Member States*	Rubella cases	Clin	Epi	Lab	Jan	Feb	Mar	Apr	May	Jun	Jul	Aug	Sep	Oct	Nov	Dec	Date Received
AFR	42/47	4170	0	0	4170	279	516	588	345	360	362	204	311	346	557	288	14	2018-01
AMR	26/35	0	0	0	0	0	0	0	0	0	0	0	0	0	0	0	0	2018-01
EMR	20/21	815	35	1	779	73	108	104	115	172	105	43	19	18	38	19	1	2018-01
EUR	30/53	619	525	12	82	60	62	86	72	82	60	55	46	38	56	2	0	2017-12
SEAR	11/11	3349	0	2012	1337	359	693	1003	655	258	103	70	114	42	32	16	4	2018-01
WPR	13/27	2109	295	100	1714	151	200	341	305	290	196	195	131	105	84	111	0	2018-01
Total	142/194	11062	855	2125	8082	922	1579	2122	1492	1162	826	567	621	549	767	436	19	

Notes: This is surveillance data, hence for the last month, the data may be incomplete. * Member States Reporting / Total Member States in Region

Rubella Case Distribution by Month and WHO Region (2015-2018)

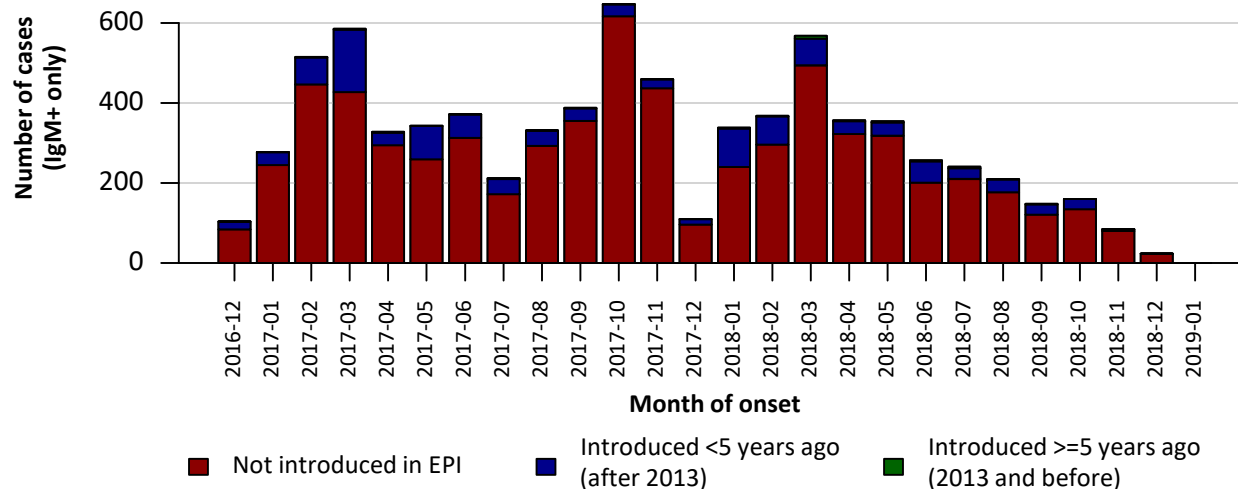


Notes: Based on data received 2019-01 - Data Source: IVB Database - This is surveillance data, hence for the last month(s), the data may be incomplete.

Rubella cases: AFR

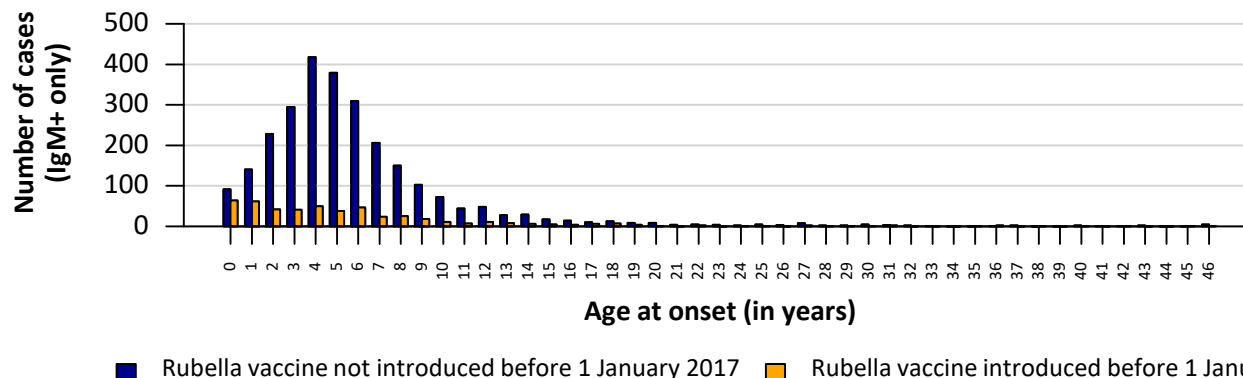


AFR Rubella Case Distribution (January 2017-December 2018)



Top 10 countries (last 12 M)			
label	RCV in RI	Cases	% of Total
Ethiopia	No	682	22
Nigeria	No	486	16
Others	-	415	13
Uganda	No	398	13
South Africa	No	305	10
DR Congo	No	286	9
Cote d'Ivoire	No	175	6
Congo	No	115	4
Mozambique	No	95	3
Mali	No	93	3
Liberia	No	59	2

AFR Age distribution of Rubella IgM+ cases by vaccine introduction status in the National EPI Programme (January 2018-December 2018)

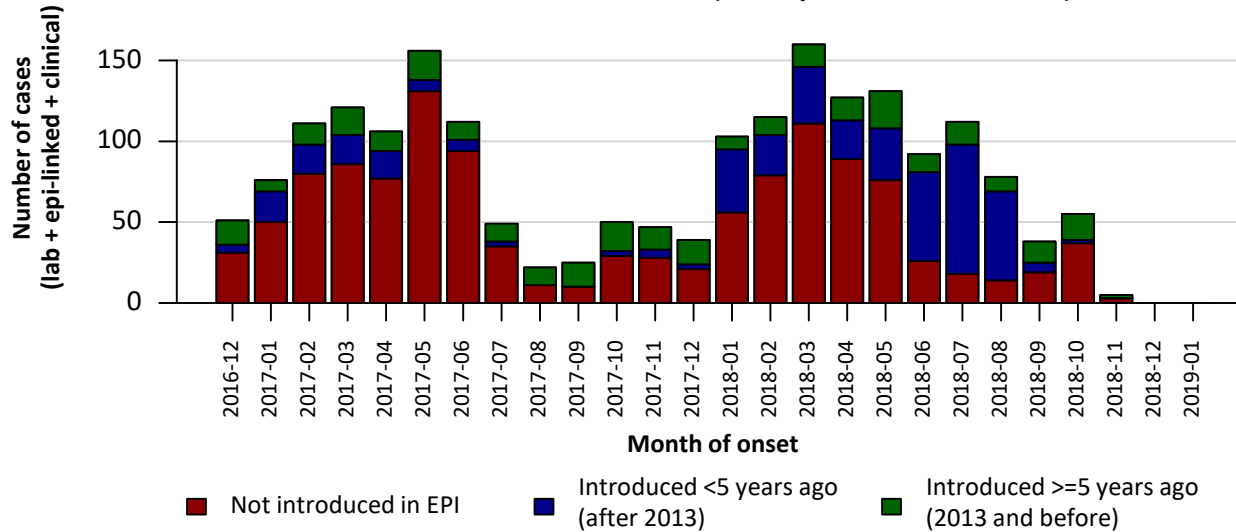


Notes: Based on data received 2019-01 Data Source: IVB Database. RCV in RI: Rubella-containing vaccine in Routine Immunization as of 31 Dec 2016.

Rubella cases: EMR

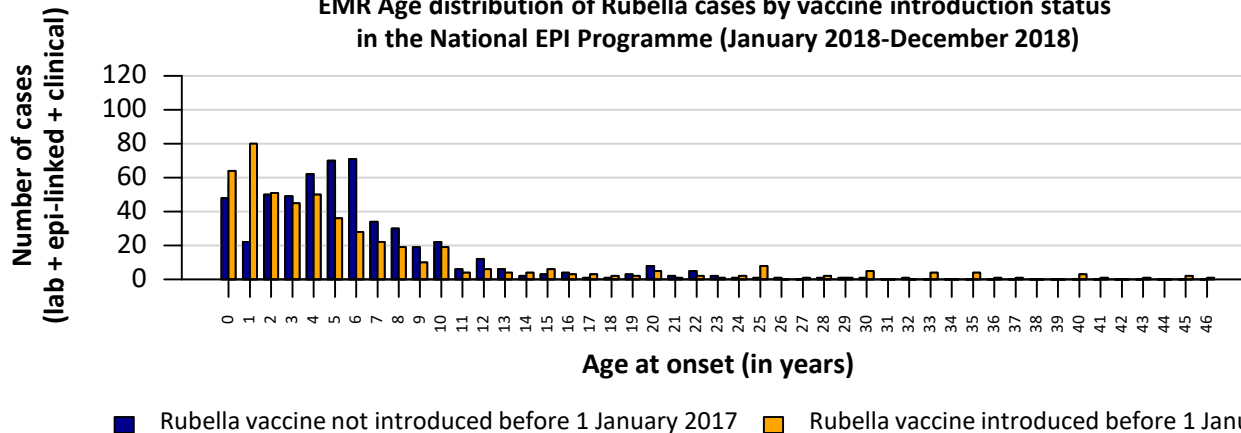


EMR Rubella Case Distribution (January 2017-December 2018)



Top 10 countries (last 12 M)			
label	RCV in RI	Cases	% of Total
Sudan	No	319	31
Yemen	2015	309	30
Pakistan	No	209	21
Saudi Arabia	1991	39	4
Afghanistan	No	37	4
Others	-	27	3
Iran (Islamic Republic of)	2004	25	2
Tunisia	2004	19	2
Libya	1995	12	1
Iraq	1995	11	1
United Arab Emirates	1985	9	1

EMR Age distribution of Rubella cases by vaccine introduction status in the National EPI Programme (January 2018-December 2018)

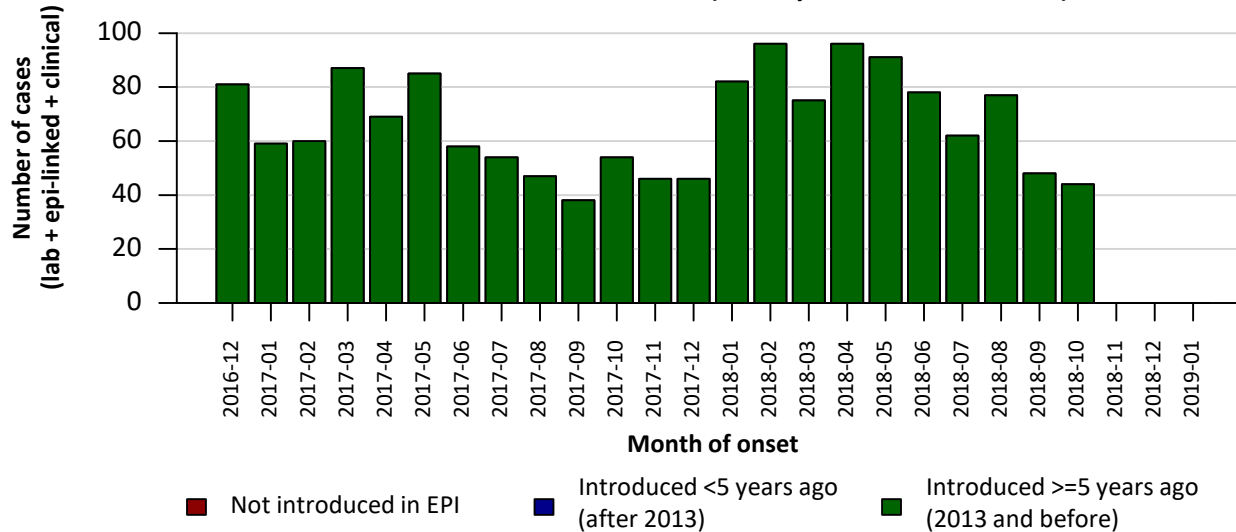


Notes: Based on data received 2019-01 Data Source: IVB Database. RCV in RI: Rubella-containing vaccine in Routine Immunization as of 31 Dec 2016.

Rubella cases: EUR

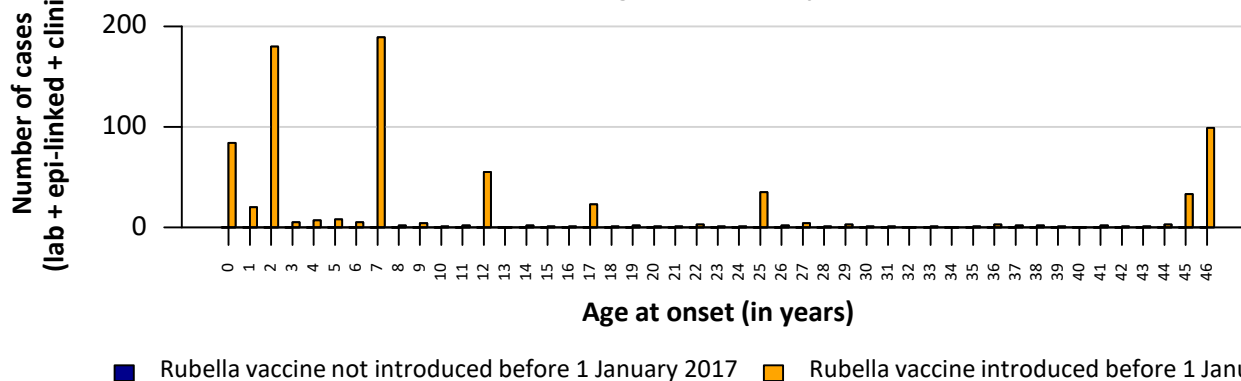


EUR Rubella Case Distribution (January 2017-December 2018)



Top 10 countries (last 12 M)			
label	RCV in RI	Cases	% of Total
Poland	1988	403	54
Ukraine	2001	210	28
Germany	1991	52	7
Others	-	24	3
Italy	1972	20	3
Turkey	2006	12	2
Kyrgyzstan	2001	8	1
Romania	2002	7	1
Austria	1973	5	1
Portugal	1984	5	1
Spain	1978	3	0

EUR Age distribution of Rubella cases by vaccine introduction status in the National EPI Programme (January 2018-December 2018)

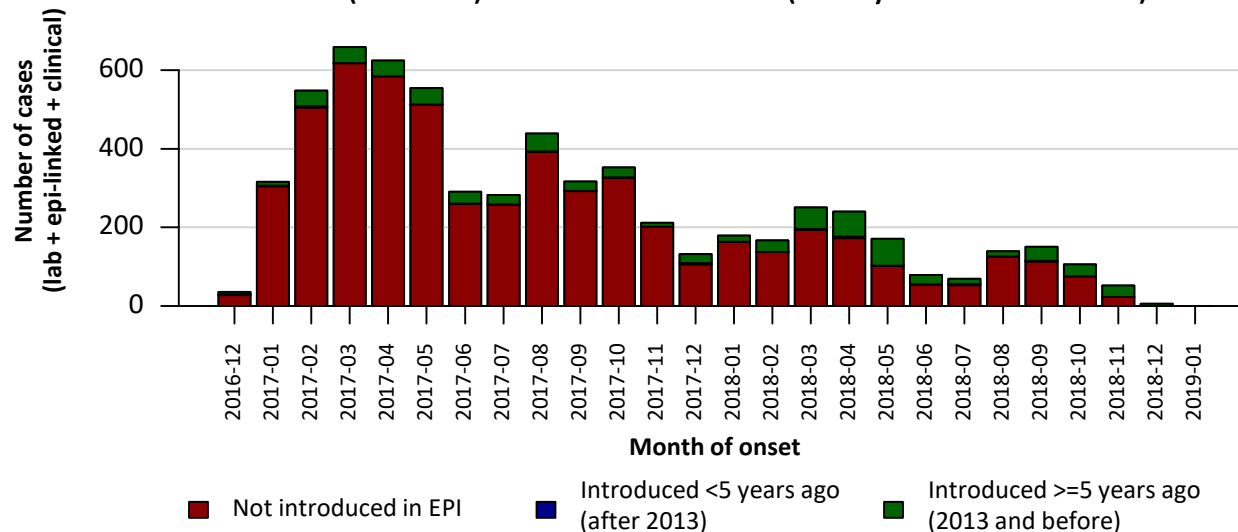


Notes: Based on data received 2018-12 Data Source: IVB Database. RCV in RI: Rubella-containing vaccine in Routine Immunization as of 31 Dec 2016. Spikes in age-distribution curve are an artifact of reporting by age bands (0=<1 yrs, 2=1-4 yrs, 7=5-9 yrs, 12=10-14 yrs, 17=15-19 yrs, 25=20-29 yrs, 45=30+yrs) instead of by age from some member states.

Rubella cases: SEAR (excl. India)

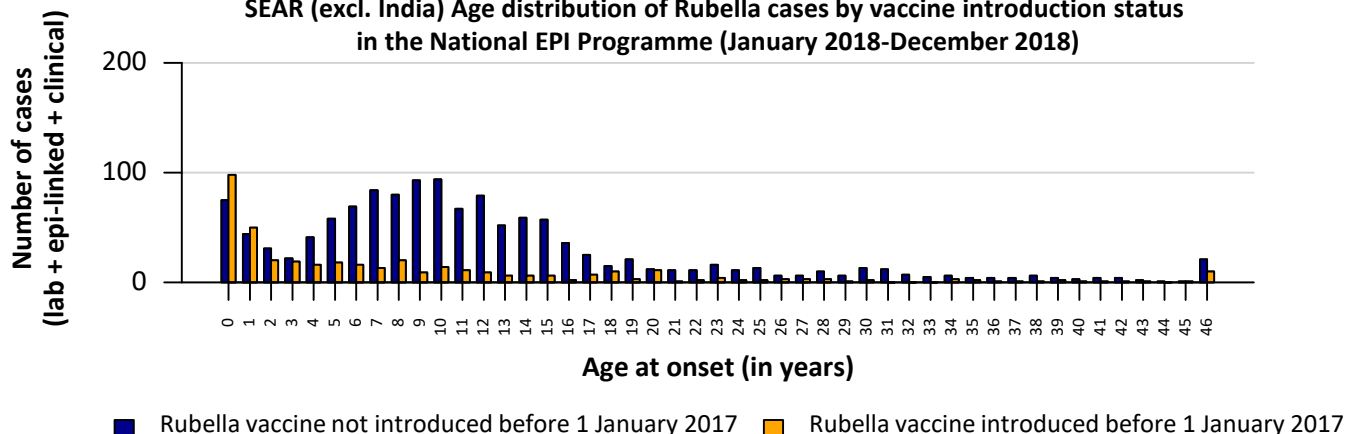


SEAR (excl. India) Rubella Case Distribution (January 2017-December 2018)



Top 10 countries (last 12 M)			
label	RCV in RI	Cases	% of Total
Indonesia	No	1215	75
Bangladesh	2012	304	19
Thailand	1993	43	3
Nepal	2013	33	2
Myanmar	2015	10	1
Timor-Leste	2016	4	0
Bhutan	2006	1	0

SEAR (excl. India) Age distribution of Rubella cases by vaccine introduction status in the National EPI Programme (January 2018-December 2018)

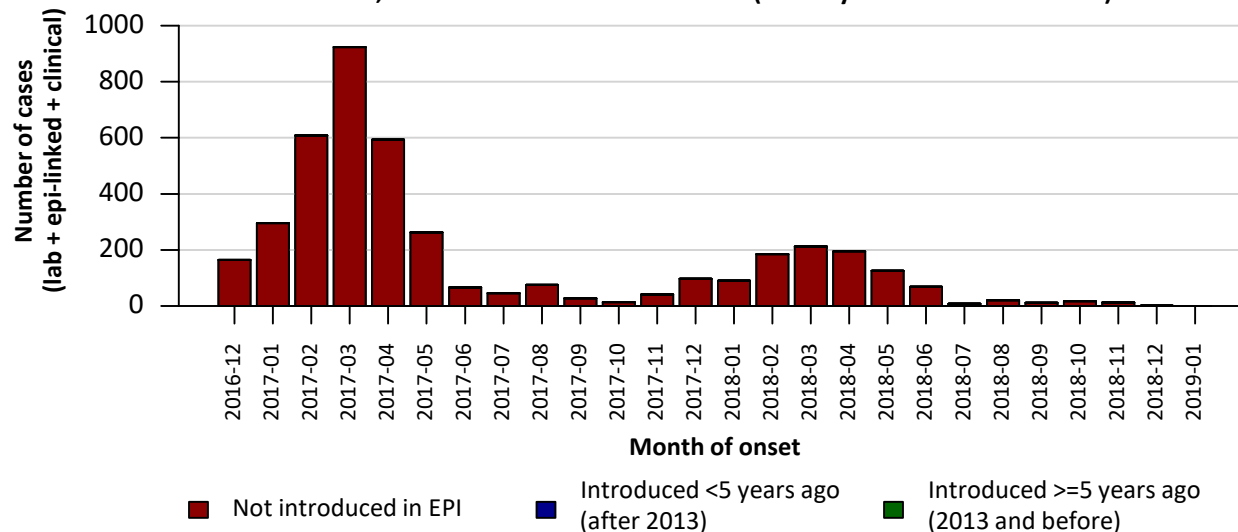


Notes: Based on data received 2019-01 Data Source: IVB Database. RCV in RI: Rubella-containing vaccine in Routine Immunization as of 31 Dec 2016.

Rubella cases: SEAR, India

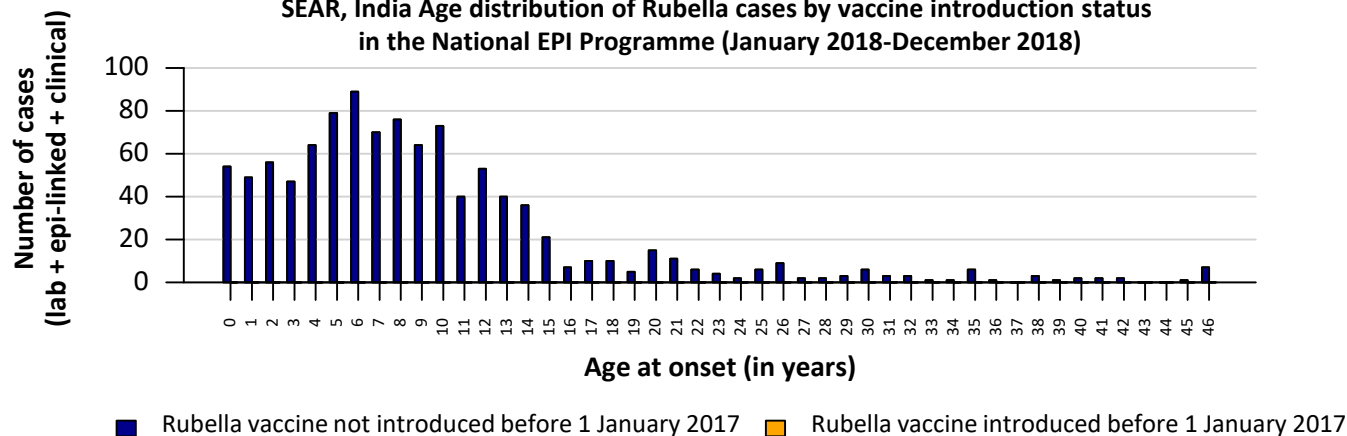


SEAR, India Rubella Case Distribution (January 2017-December 2018)



Top 10 countries (last 12 M)			
label	RCV in RI	Cases	% of Total
India	No	947	100

SEAR, India Age distribution of Rubella cases by vaccine introduction status in the National EPI Programme (January 2018-December 2018)

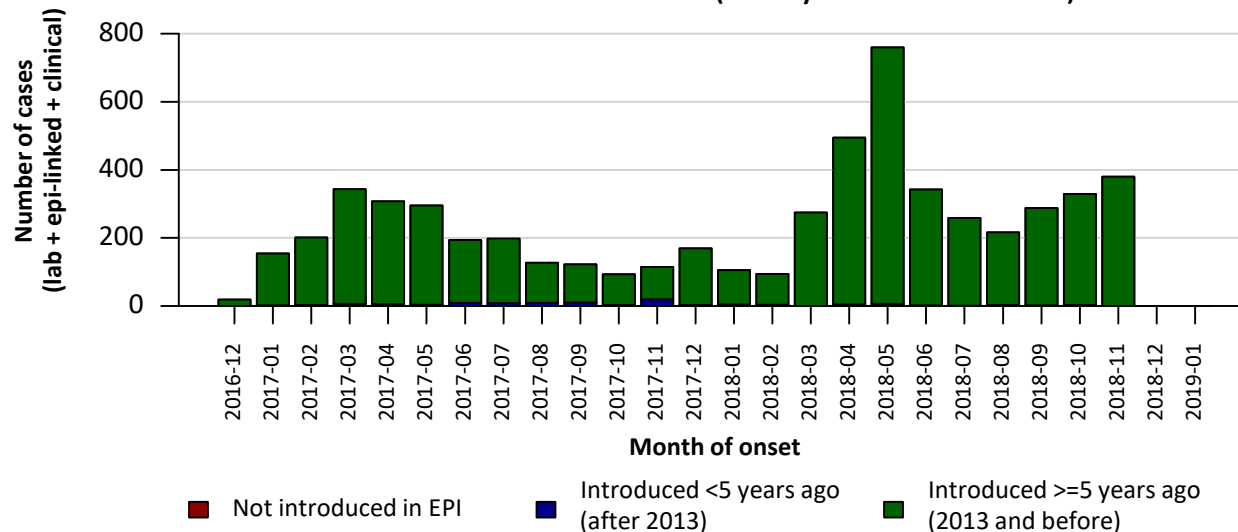


Notes: Based on data received 2019-01 Data Source: IVB Database. RCV in RI: Rubella-containing vaccine in Routine Immunization as of 31 Dec 2016.

Rubella cases: WPR

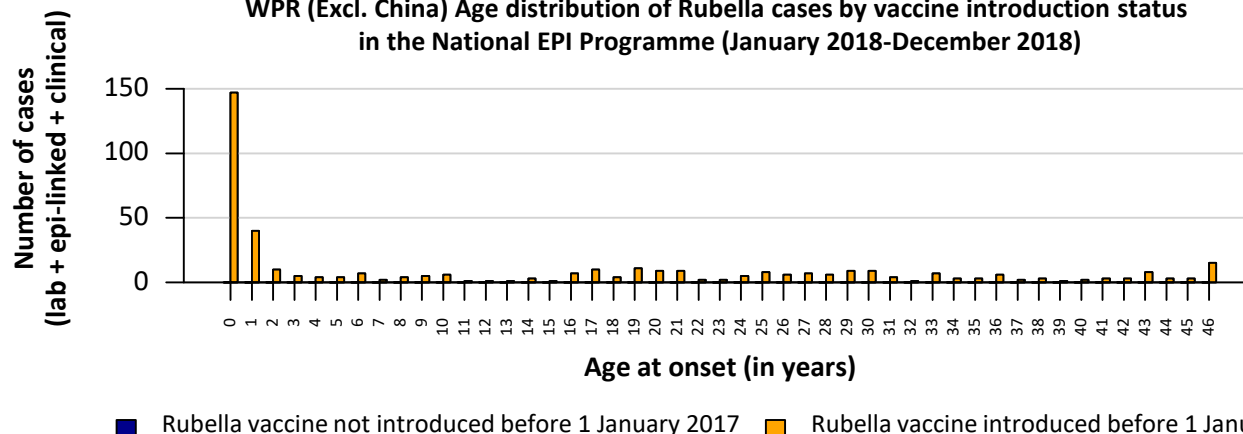


WPR Rubella Case Distribution (January 2017-December 2018)



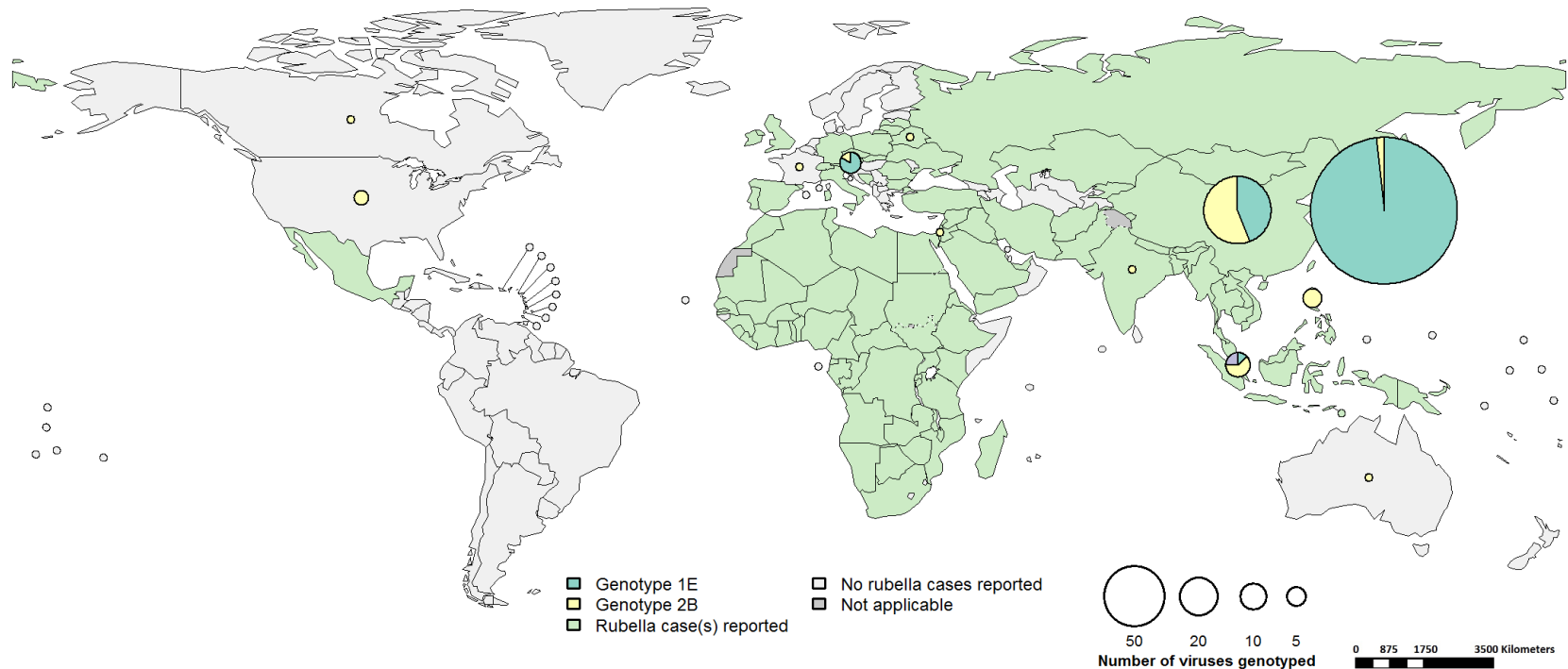
Top 10 countries (last 12 M)			
label	RCV in RI	Cases	% of Total
China	2008	3154	89
Malaysia	1998	154	4
Philippines	2010	111	3
Japan	1989	57	2
Viet Nam	2015	31	1
Singapore	1990	16	0
Lao People's Democratic Republic	2012	15	0
Cambodia	2013	3	0
Papua New Guinea	2015	1	0
Republic of Korea	1982	1	0

WPR (Excl. China) Age distribution of Rubella cases by vaccine introduction status in the National EPI Programme (January 2018-December 2018)



Notes: Based on data received 2019-01 Data Source: IVB Database. RCV in RI: Rubella-containing vaccine in Routine Immunization as of 31 Dec 2016.

Distribution of rubella genotypes (last 12 months)



Map production: World Health Organization, WHO, 2019. All rights reserved
Data source: IVB & RubNS Databases

Disclaimer:

The boundaries and names shown and the designations used on this map do not imply the expression of any opinion whatsoever on the part of the World Health Organization concerning the legal status of any country, territory, city or area or of its authorities, or concerning the delimitation of its frontiers or boundaries. Dotted and dashed lines on maps represent approximate border lines for which there may not yet be full agreement.

Notes: Data Source: RubNS database (Genotypes) and IVB Database (Incidence) as of 2019-01-09 and covering the period 2017-12-01 to 2018-11-30 - Pie charts proportional to the number of sequenced viruses

Laboratory

Measles and Rubella IgM Data Summary

2018										
Region	Member States*	Specimens received	Measles tested	Measles positive n(%)	Measles equivocal n(%)	Measles negative n(%)	Rubella tested	Rubella positive n(%)	Rubella equivocal n(%)	Rubella negative n(%)
AFR	40/47	35995	35995	7100 (20)	890 (2)	28005 (78)	27807	4114 (15)	1571 (6)	22122 (80)
AMR	27/35	15618	14236	1305 (9)	146 (1)	12335 (87)	12204	372 (3)	246 (2)	11177 (92)
EMR	20/21	35606	30988	10744 (35)	180 (1)	20064 (65)	27829	1363 (5)	438 (2)	26028 (94)
EUR	37/53	49405	45101	14821 (33)	268 (1)	29736 (66)	29077	649 (2)	77 (0)	28330 (97)
SEAR	11/11	30962	25426	11074 (44)	1814 (7)	14808 (58)	17206	3330 (19)	1442 (8)	14305 (83)
WPR	27/27	29022	26457	4672 (18)	533 (2)	13430 (51)	21630	592 (3)	425 (2)	12000 (55)
Total	162/194	196608	178203	49716 (28)	3831 (2)	118378 (66)	135753	10420 (8)	4199 (3)	113962 (84)

2017										
Region	Member States*	Specimens received	Measles tested	Measles positive n(%)	Measles equivocal n(%)	Measles negative n(%)	Rubella tested	Rubella positive n(%)	Rubella equivocal n(%)	Rubella negative n(%)
AFR	39/47	35186	35186	4635 (13)	665 (2)	29886 (85)	29626	4964 (17)	1261 (4)	23401 (79)
AMR	27/35	9104	8758	634 (7)	57 (1)	7476 (85)	7940	327 (4)	106 (1)	6918 (87)
EMR	20/21	36251	34782	10561 (30)	127 (0)	24094 (69)	32726	1105 (3)	99 (0)	31522 (96)
EUR	38/53	42450	37192	13748 (37)	272 (1)	22642 (61)	26322	434 (2)	66 (0)	25736 (98)
SEAR	11/11	35379	32335	13177 (41)	781 (2)	20062 (62)	20383	4831 (24)	741 (4)	14804 (73)
WPR	27/27	16467	15211	2100 (14)	333 (2)	11952 (79)	12656	606 (5)	418 (3)	10748 (85)
Total	162/194	174837	163464	44855 (27)	2235 (1)	116112 (71)	129653	12267 (9)	2691 (2)	113129 (87)

Notes: Based on data received 2019-01 - * Member States Reporting / Total Member States in Region

Measles and Rubella IgM Data Summary

Notes: **Based on data received 2019-01** - * Member States Reporting / Total Member States in Region

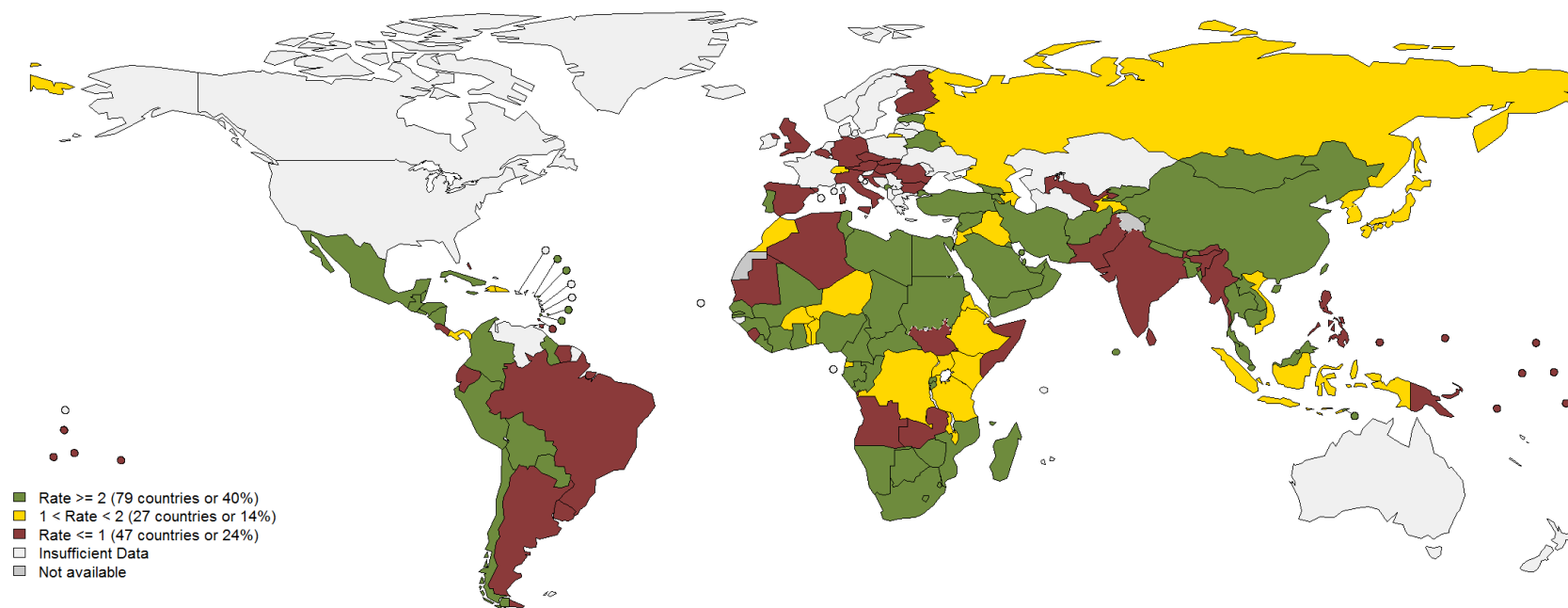
2018										
Region	Member States*	Specimens received	Measles tested	Measles positive n(%)	Measles equivocal n(%)	Measles negative n(%)	Rubella tested	Rubella positive n(%)	Rubella equivocal n(%)	Rubella negative n(%)
AFR	40/47	35995	35995	7100 (20)	890 (2)	28005 (78)	27807	4114 (15)	1571 (6)	22122 (80)
AMR	27/35	15618	14236	1305 (9)	146 (1)	12335 (87)	12204	372 (3)	246 (2)	11177 (92)
EMR	20/21	35606	30988	10744 (35)	180 (1)	20064 (65)	27829	1363 (5)	438 (2)	26028 (94)
EUR	37/53	49405	45101	14821 (33)	268 (1)	29736 (66)	29077	649 (2)	77 (0)	28330 (97)
SEAR	11/11	30962	25426	11074 (44)	1814 (7)	14808 (58)	17206	3330 (19)	1442 (8)	14305 (83)
WPR	27/27	29022	26457	4672 (18)	533 (2)	13430 (51)	21630	592 (3)	425 (2)	12000 (55)
Total	162/194	196608	178203	49716 (28)	3831 (2)	118378 (66)	135753	10420 (8)	4199 (3)	113962 (84)

Notes: **Based on data received 2018-01** - * Member States Reporting / Total Member States in Region

2017										
Region	Member States*	Specimens received	Measles tested	Measles positive n(%)	Measles equivocal n(%)	Measles negative n(%)	Rubella tested	Rubella positive n(%)	Rubella equivocal n(%)	Rubella negative n(%)
AFR	39/47	32006	32006	4183 (13)	607 (2)	27216 (85)	26560	4451 (17)	1119 (4)	20990 (79)
AMR	25/35	11431	11053	243 (2)	102 (1)	6877 (62)	10346	358 (3)	161 (2)	6493 (63)
EMR	20/21	31182	30095	8835 (29)	127 (0)	21133 (70)	28017	999 (4)	92 (0)	26926 (96)
EUR	37/53	33017	28718	11603 (40)	234 (1)	16502 (57)	19788	318 (2)	54 (0)	19340 (98)
SEAR	11/11	31538	27374	11463 (42)	581 (2)	15307 (56)	16973	3934 (23)	531 (3)	12485 (74)
WPR	27/27	15535	14504	2094 (14)	329 (2)	11606 (80)	11975	600 (5)	401 (3)	10442 (87)
Total	159/194	154709	143750	38421 (27)	1980 (1)	98641 (69)	113659	10660 (9)	2358 (2)	96676 (85)

Performance of Surveillance

Surveillance sensitivity reporting rate of measles and rubella (12 months, discarded cases* per 100,000 population)



Map production: World Health Organization, WHO, 2019. All rights reserved
Data source: IVB Database

Disclaimer:

The boundaries and names shown and the designations used on this map do not imply the expression of any opinion whatsoever on the part of the World Health Organization concerning the legal status of any country, territory, city or area or of its authorities, or concerning the delimitation of its frontiers or boundaries. Dotted and dashed lines on maps represent approximate border lines for which there may not yet be full agreement.

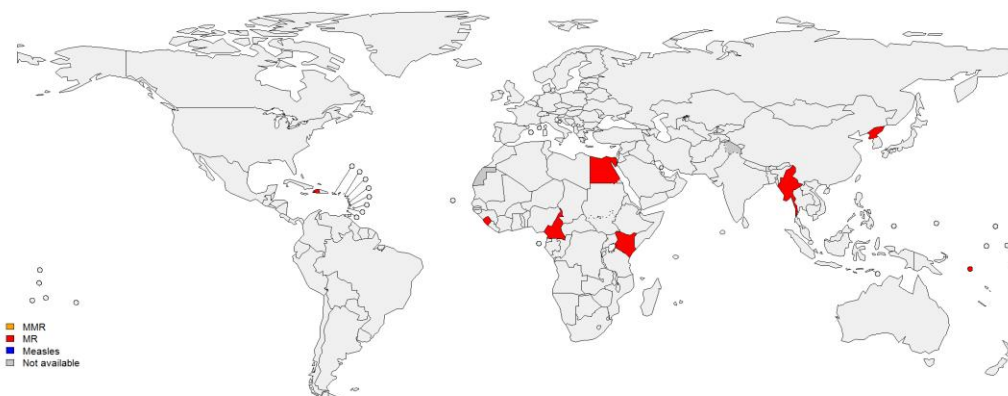
0 875 1750 3500 Kilometers

Notes: Based on data received 2019-01 and covering the period between 2017-12 and 2018-11 - Target: ≥ 2 discarded cases* / 100,000 population** - * Suspected cases investigated and discarded as non-measles non-rubella using laboratory testing and/or epidemiological linkage to another etiology ** World population prospects, 2017 revision

Supplementary Immunization Activities

Next 6 months MMR, MR and Measles campaigns

Region	Name	Activity	Type	Year	StartDate	EndDate	Age Group(s)	Extent	Target
AFR	Kenya	FollowUp	MR	2019	2019-02-01	-	9-59 M	National	7253043
AFR	Cameroon	FollowUp	MR	2019	2019-03-25	2019-03-29	9-59 M	National	3275427
AMR	Haiti	FollowUp	MR	2019	2019-04-01	-	9-59 M	National	1336538
AFR	Sierra Leone	CatchUp	MR	2019	2019-04-17	2019-04-26	9 M-14 Y	National	3084683
EMR	Egypt	NIDs	MR	2019	2019-05-01	-	9 M-<6 Y	National	15817400
SEAR	Democratic People's Republic of Korea (the)	CatchUp	MR	2019	2019-05-01	-	9 M-14 Y	National	6725957
SEAR	Myanmar	FollowUp	MR	2019	2019-05-01	2019-06-30	9-59 M	National	5252339
WPR	Solomon Islands	FollowUp	MR	2019	2019-06-01	-	9-59 M	National	71707



Regional Bulletins and Newsletters

(Switch to presentation mode if links are inactive)

- AFR [Monthly feedback tables](#)
- AMR: [Weekly bulletin](#) (published every Friday)
- EMR: [Home page](#)
- EUR : [Periodical bulletin](#)
[Monthly data](#)
- SEAR: [Monthly bulletin](#)
[EPI country fact sheets](#)
- WPR: [Monthly Bulletin](#)
[Country profiles](#)

Link to global Measles Surveillance
[HQ website](#)