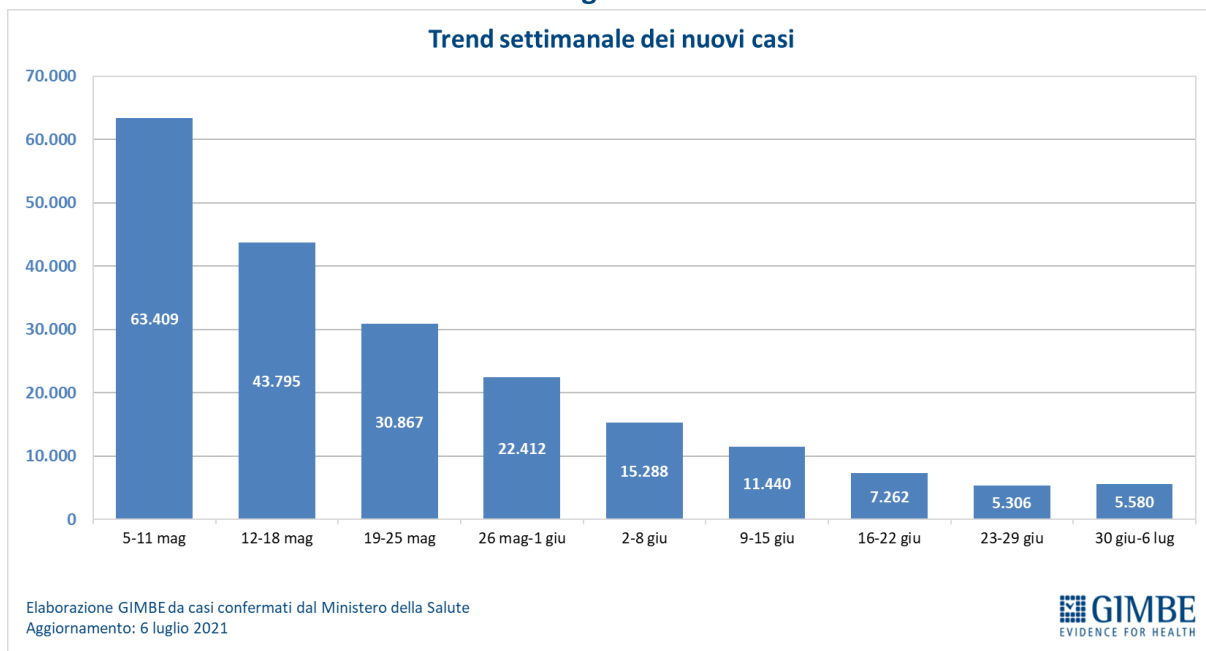
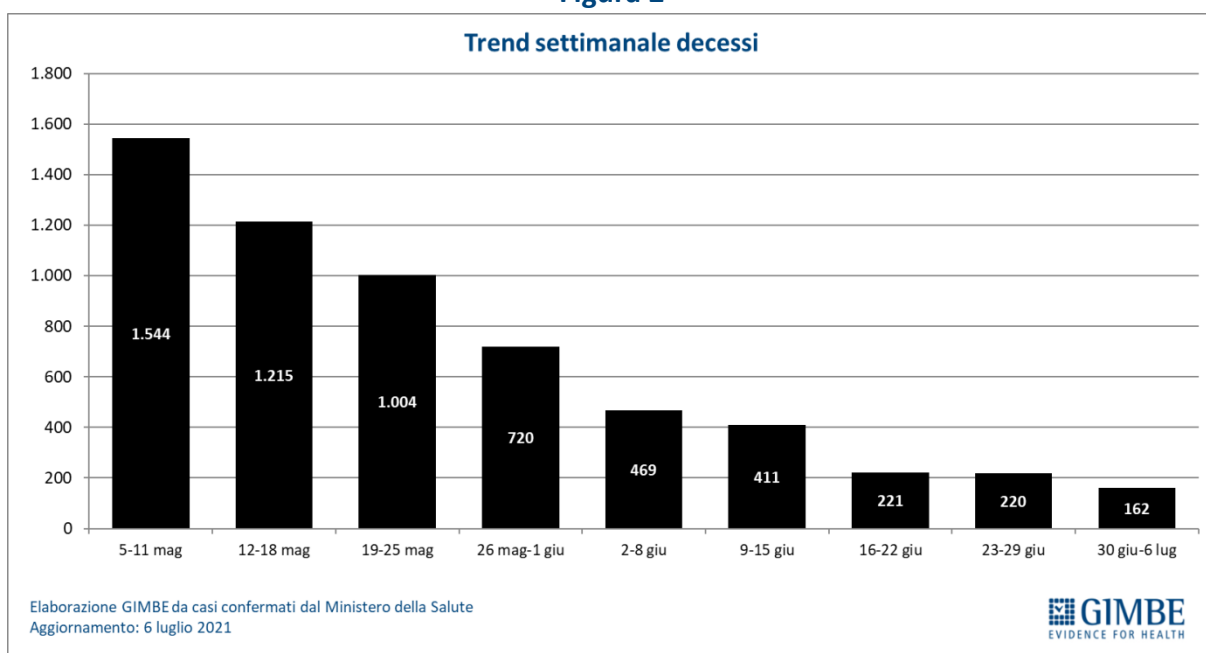


**EMBARGO: 8 luglio 2021, ore 10.00**

**Figura 1**



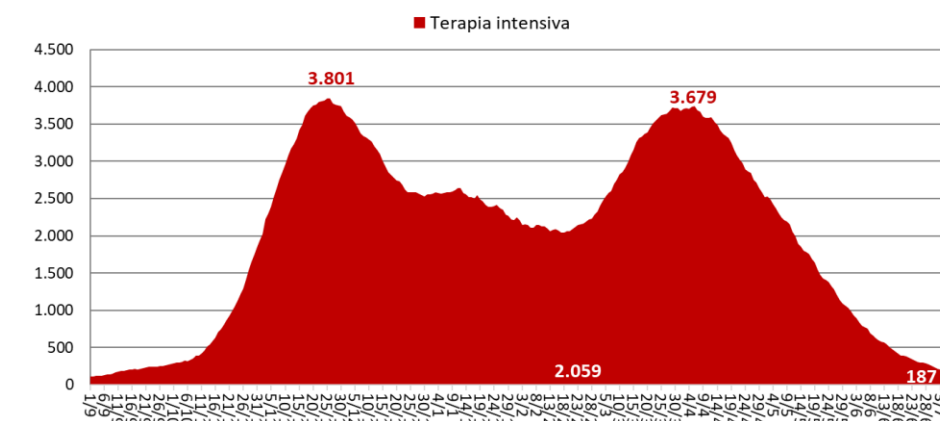
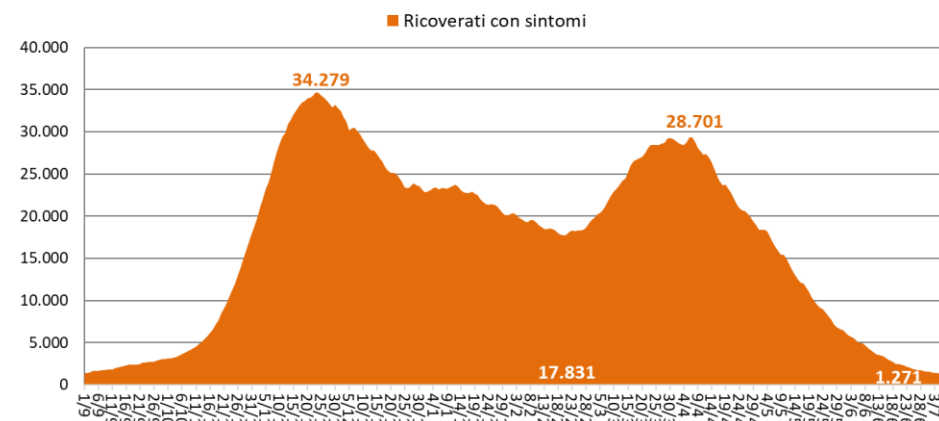
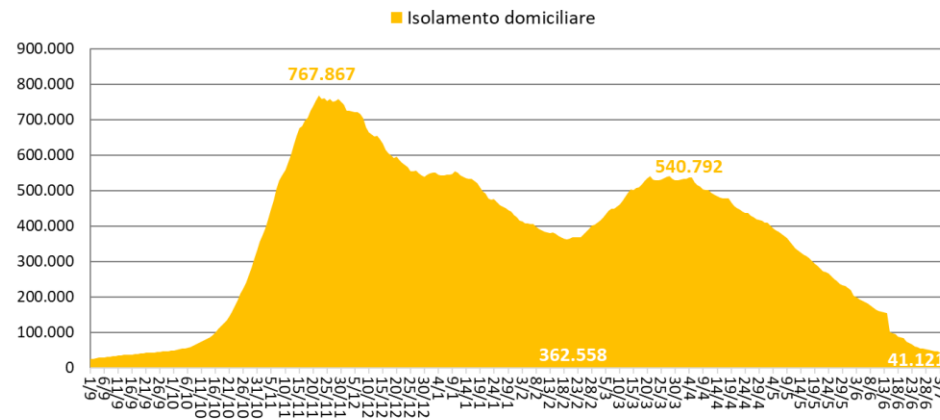
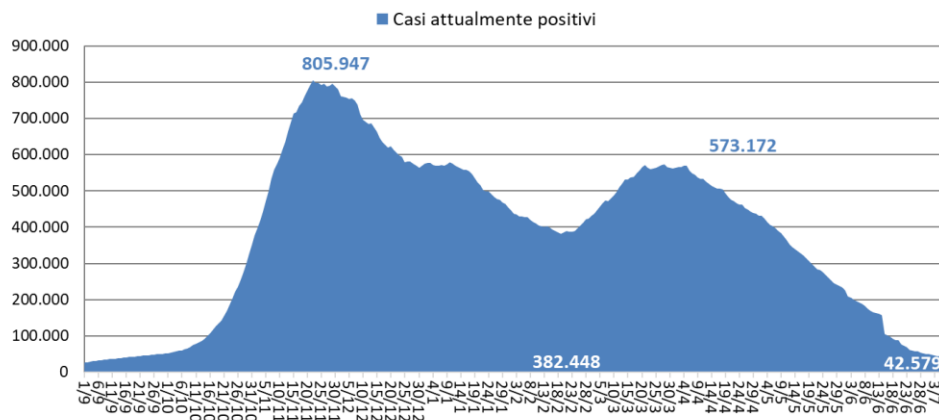
**Figura 2**



# EMBARGO: 8 luglio 2021, ore 10.00

## Figura 3

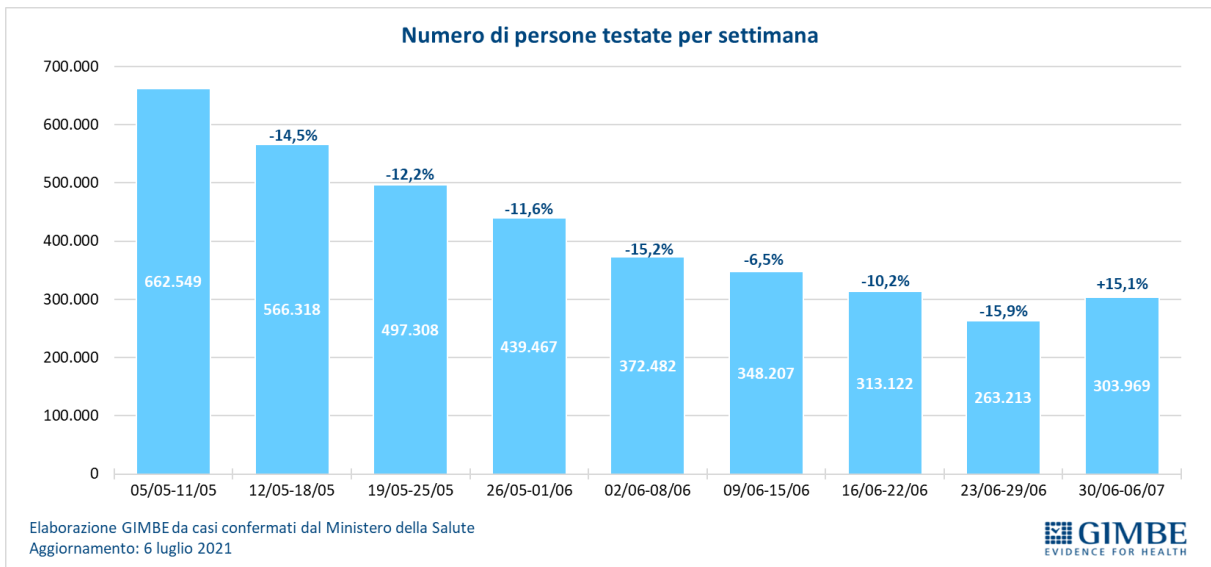
### Trend settimanale di casi attualmente positivi, isolamento domiciliare, ricoveri con sintomi, terapie intensive



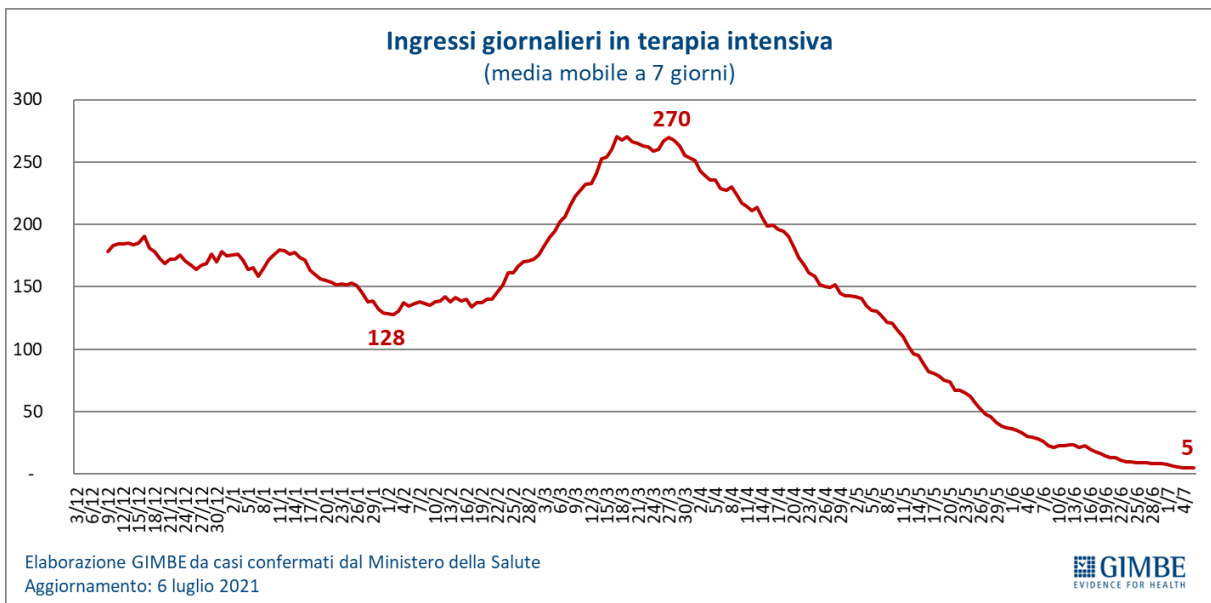
Elaborazione GIMBE da casi confermati dal Ministero della Salute  
Aggiornamento: 6 luglio 2021

**EMBARGO: 8 luglio 2021, ore 10.00**

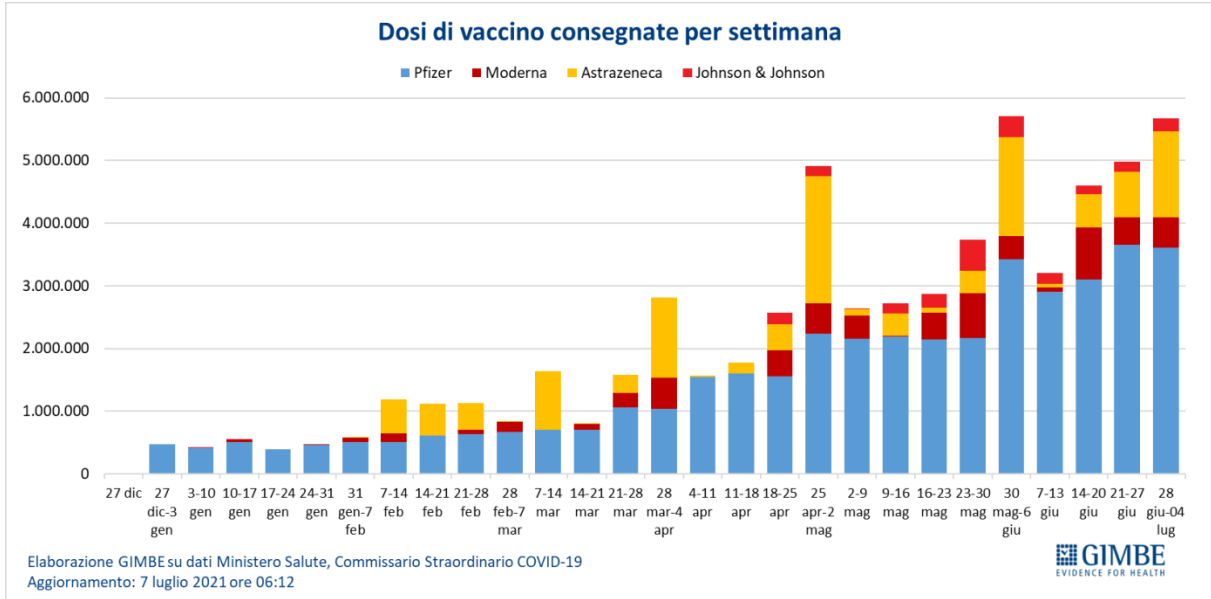
**Figura 4**



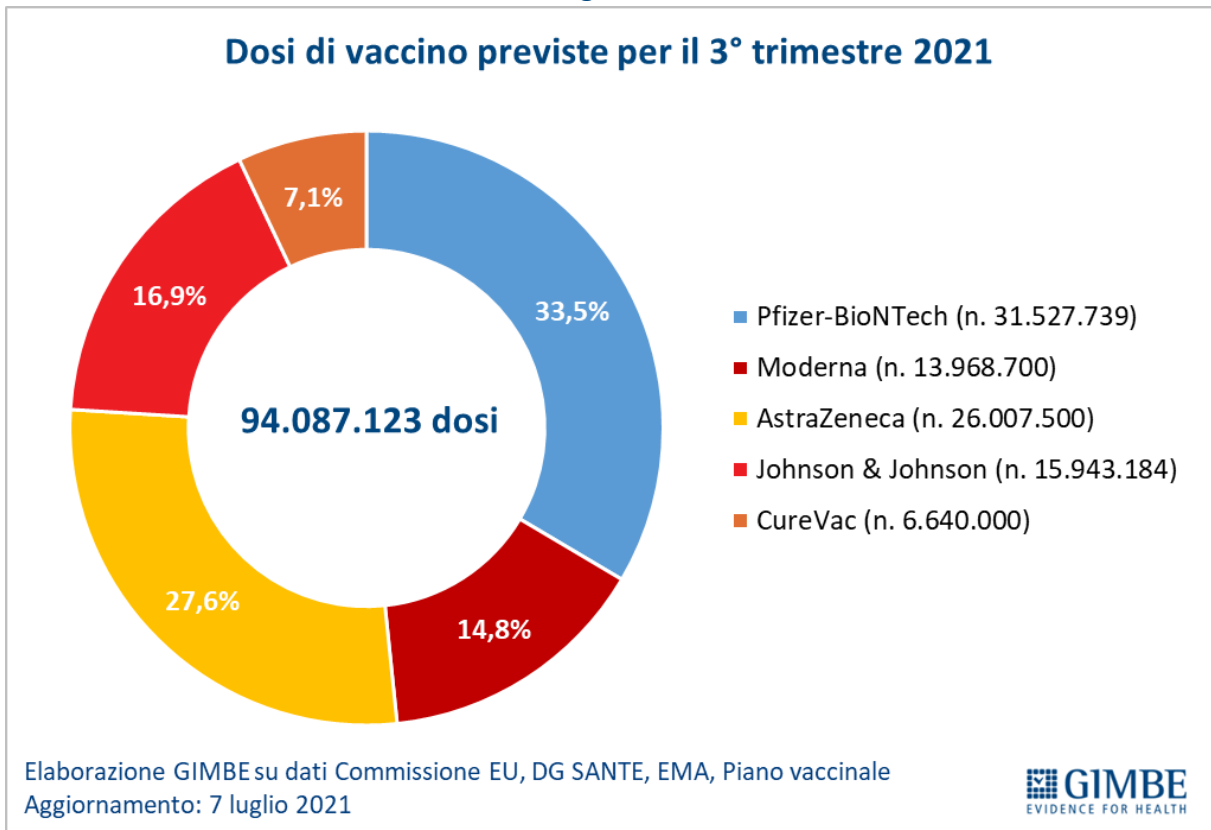
**Figura 5**



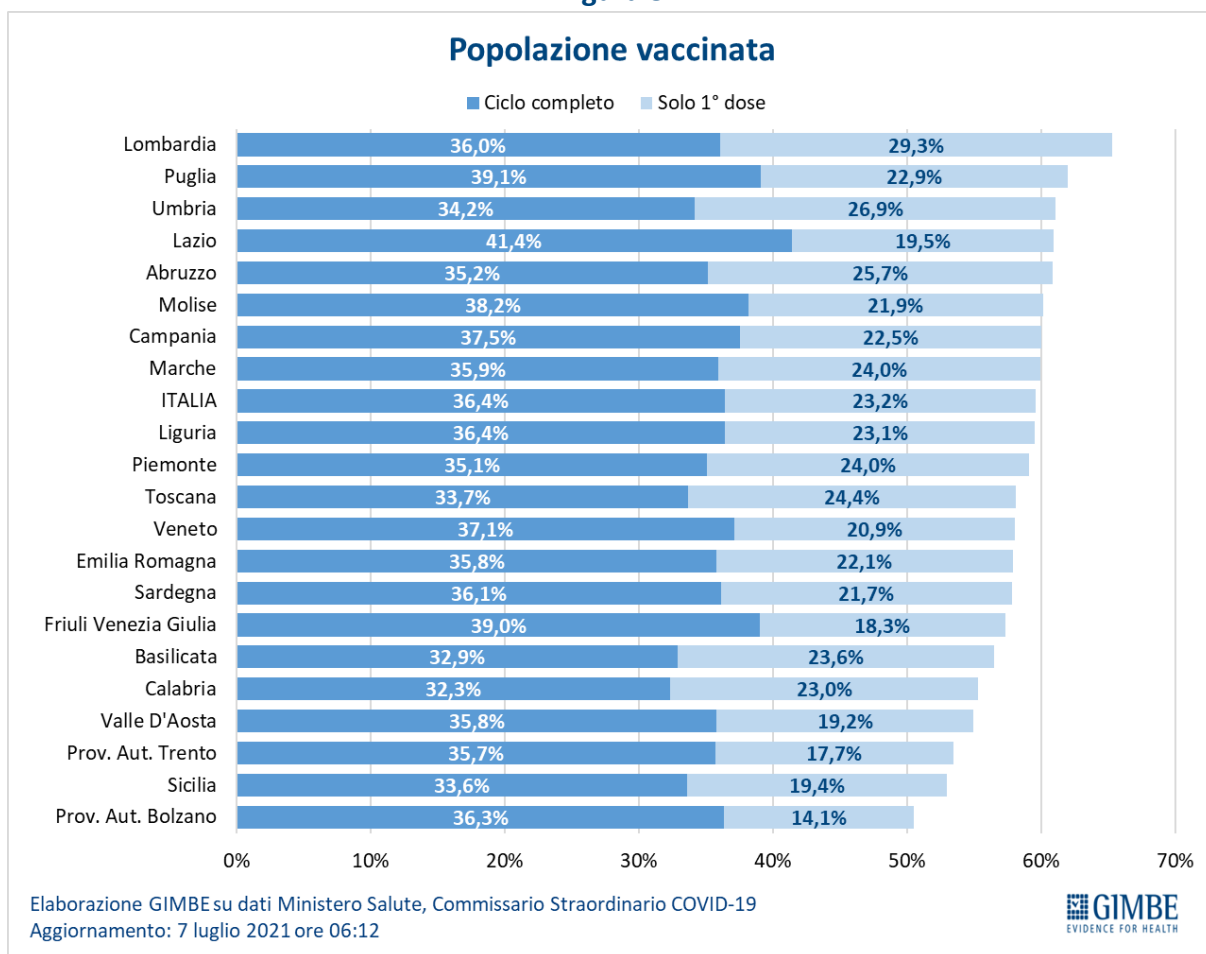
**Figura 6**



**Figura 7**

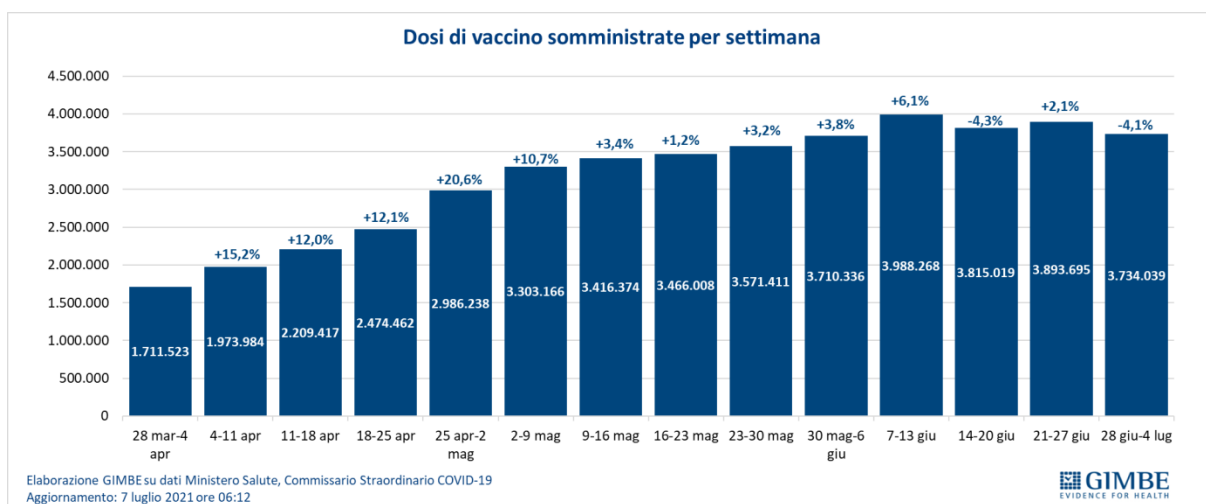


**Figura 8**

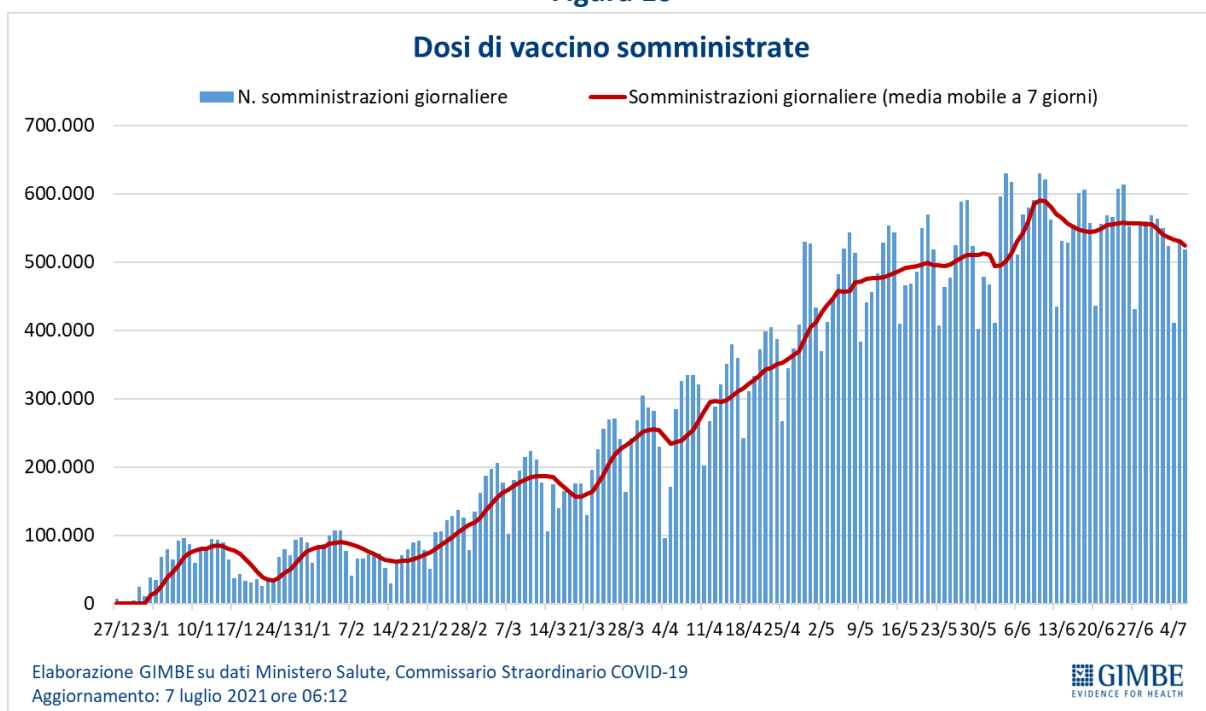


**EMBARGO: 8 luglio 2021, ore 10.00**

**Figura 9**

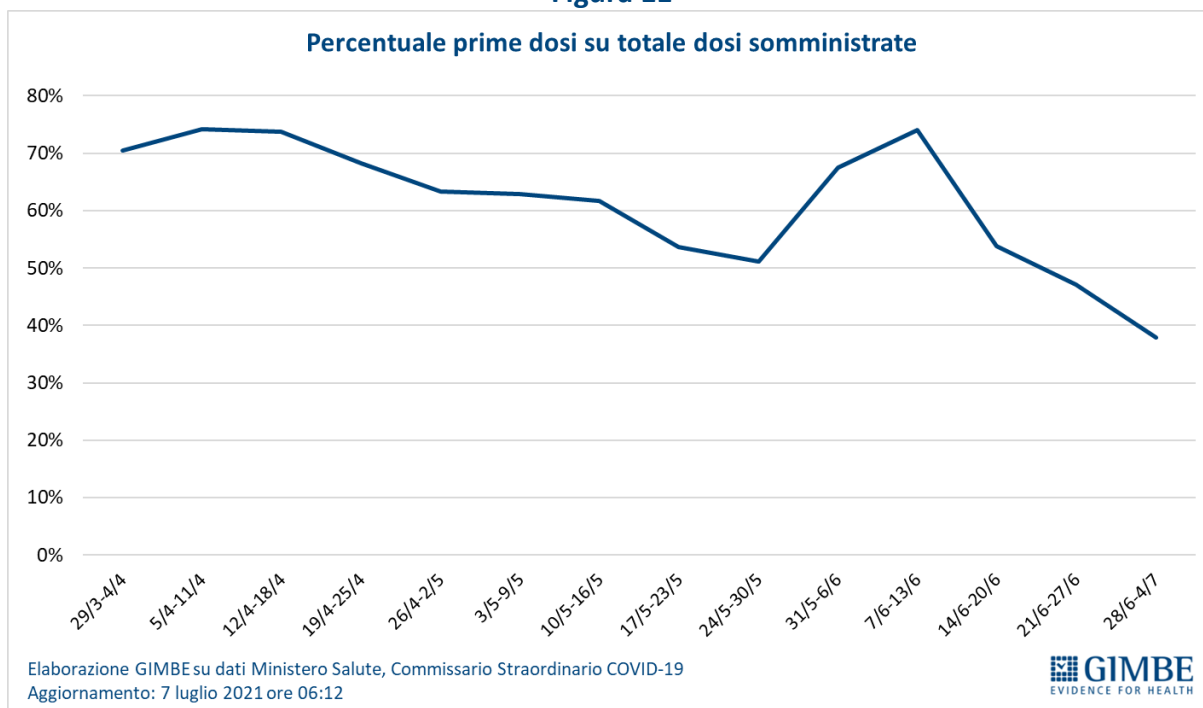


**Figura 10**

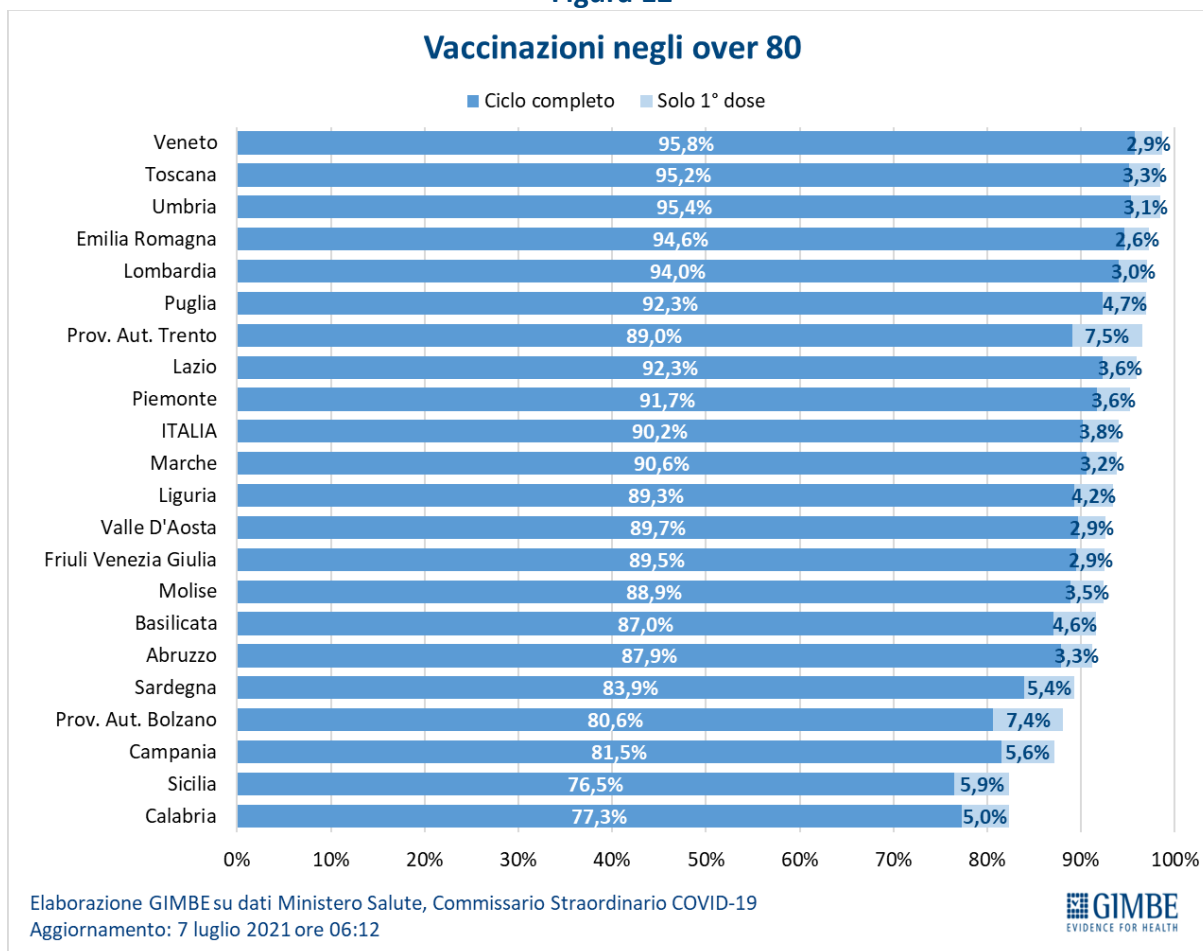


**EMBARGO: 8 luglio 2021, ore 10.00**

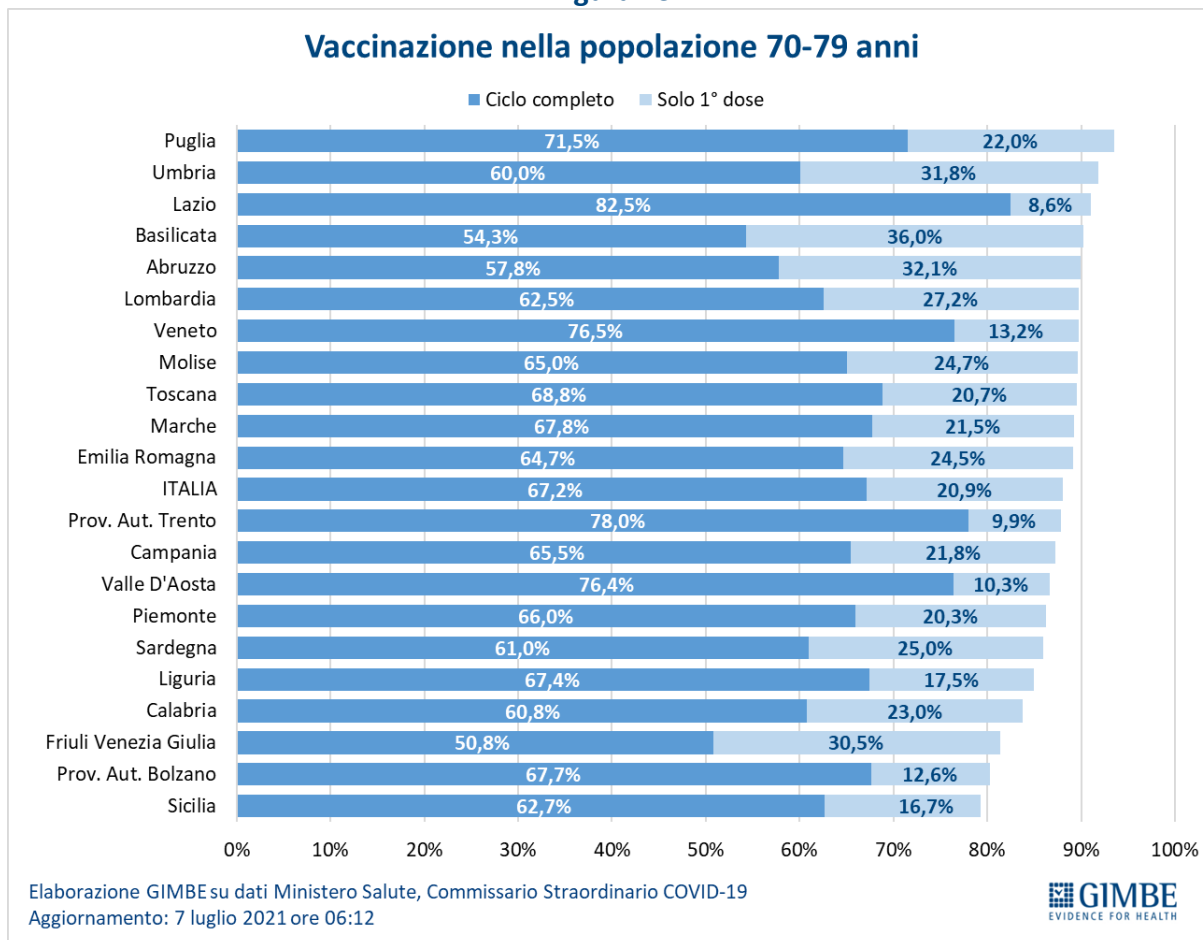
**Figura 11**



**Figura 12**

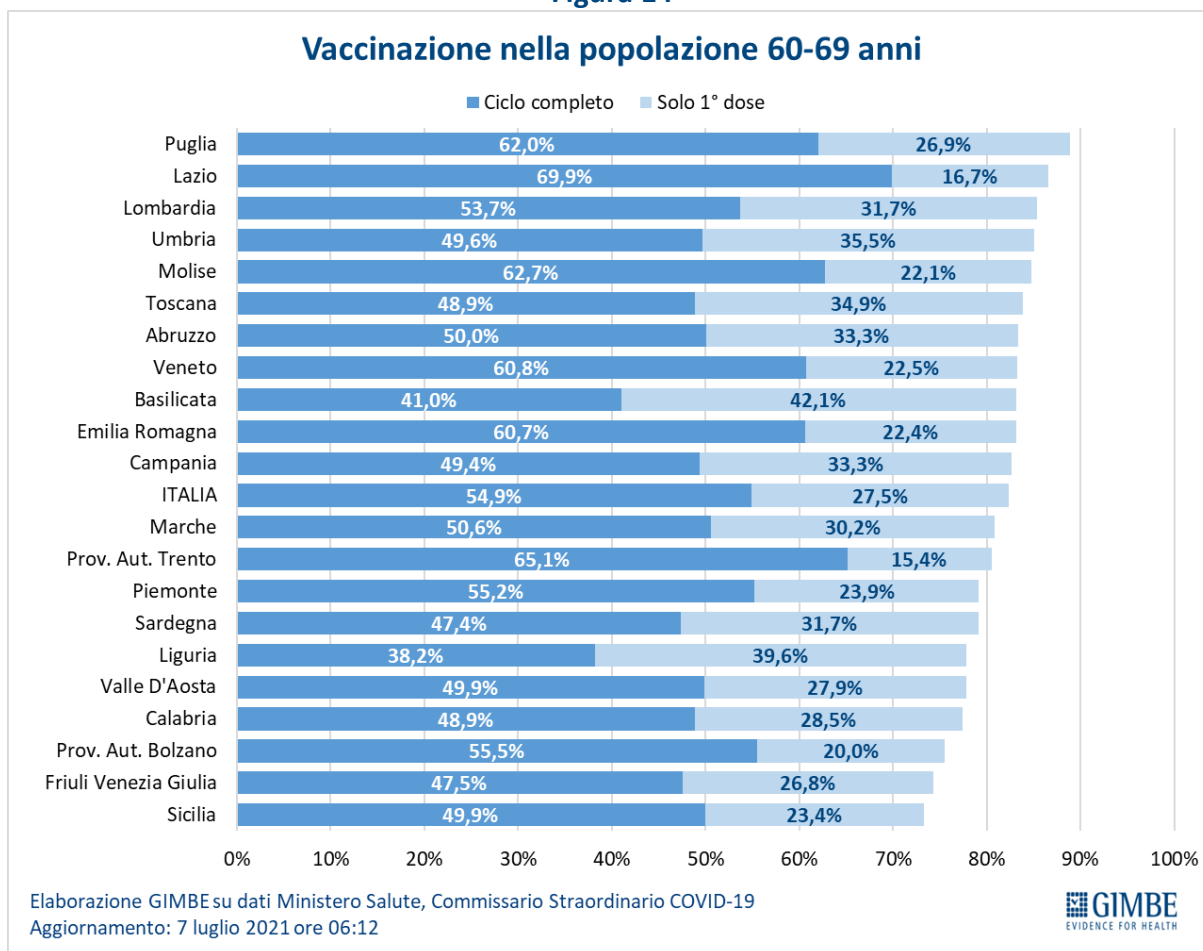


**Figura 13**

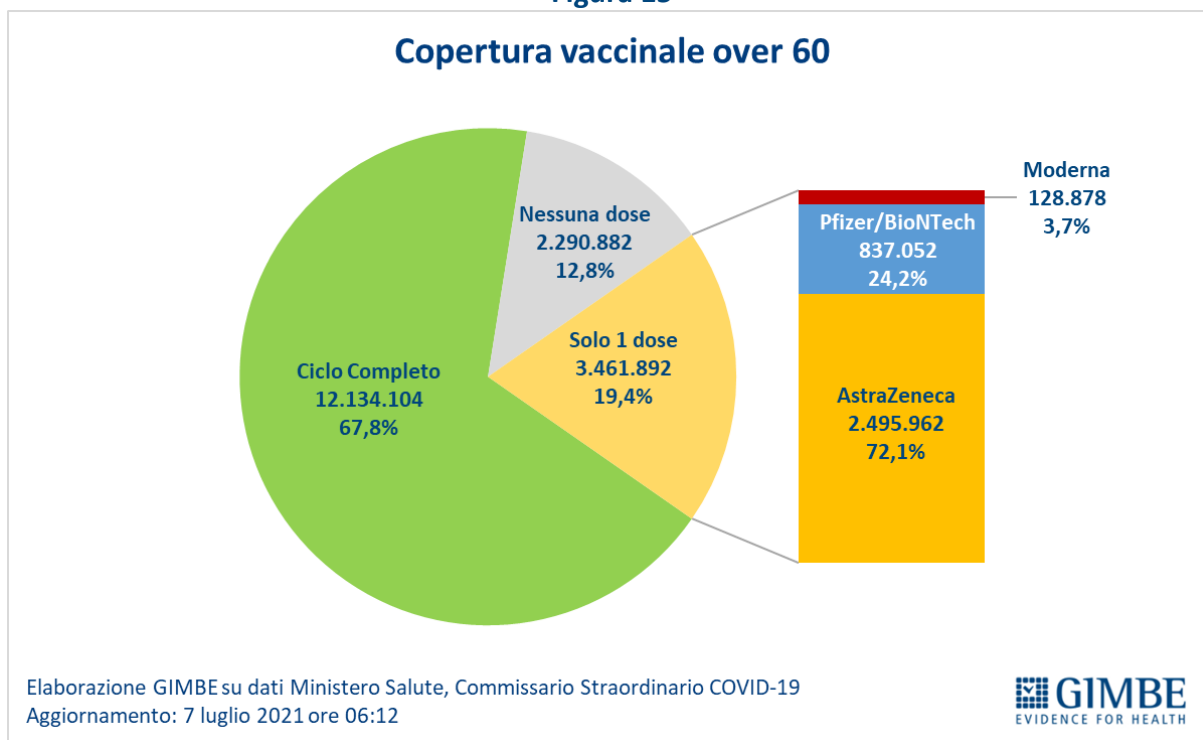




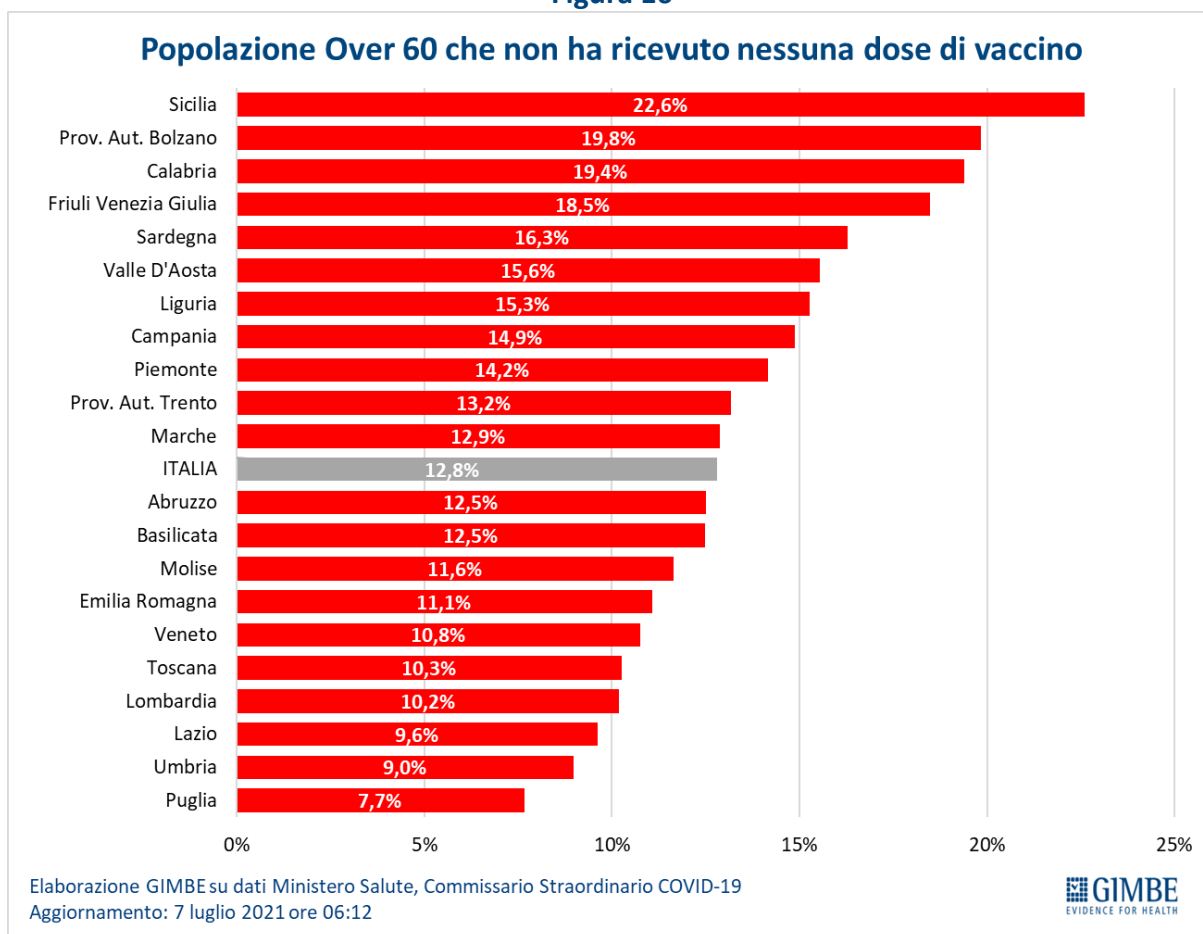
**Figura 14**



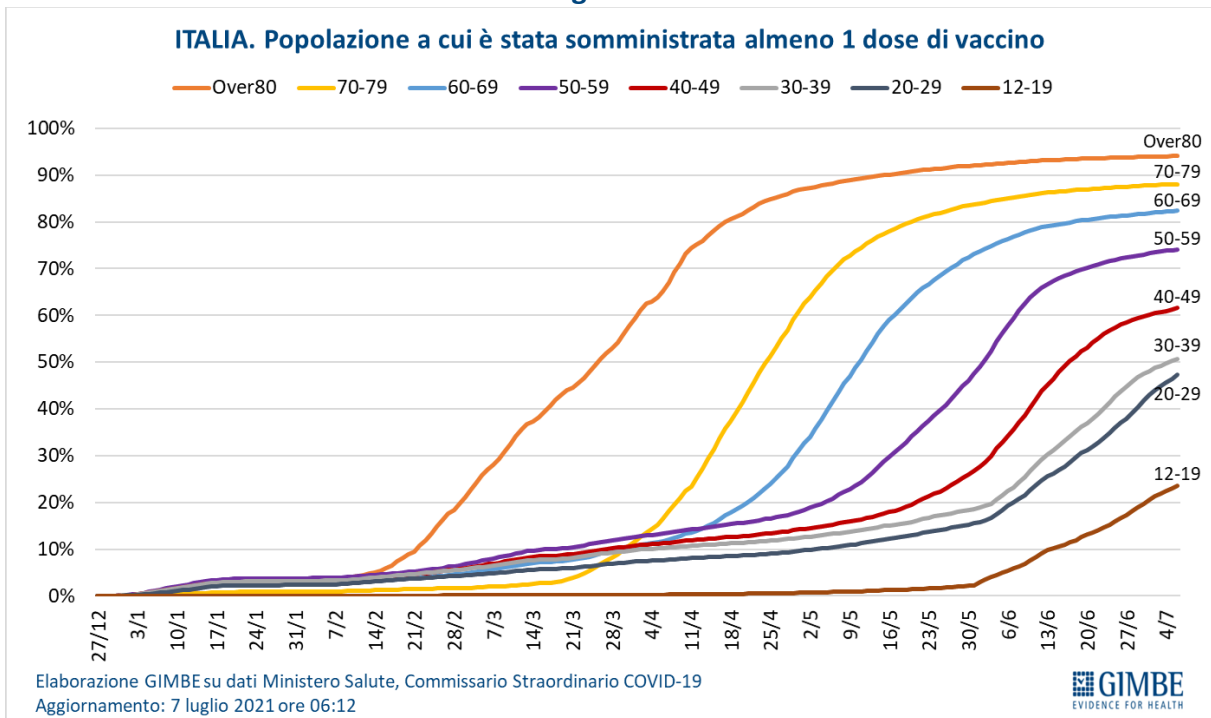
**Figura 15**



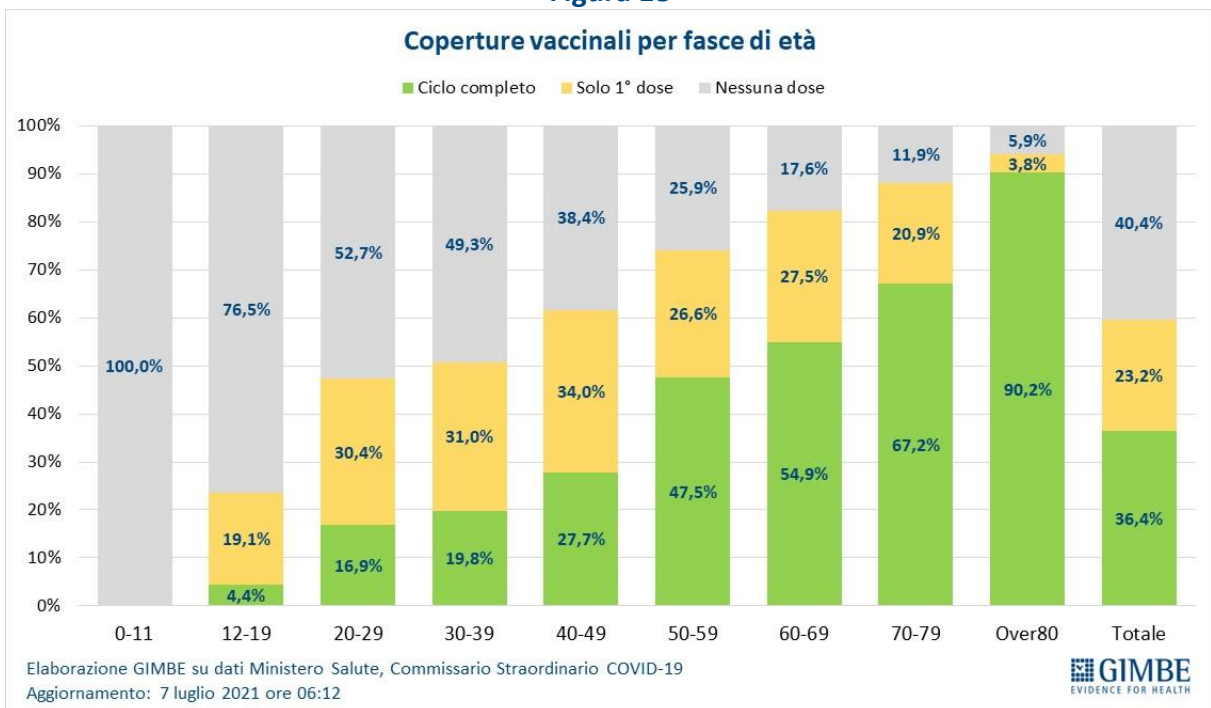
**Figura 16**



**Figura 17**



**Figura 18**



## EMBARGO: 8 luglio 2021, ore 10.00

Tabella. Indicatori regionali: settimana 30 giugno-6 luglio 2021

Regione	Casi attualmente positivi per 100.000 abitanti	Variazione % nuovi casi	Posti letto in area medica occupati da pazienti COVID-19	Posti letto in terapia intensiva occupati da pazienti COVID-19
Abruzzo	68	25,5%	2%	1%
Basilicata	124	-44,8%	4%	0%
Calabria	140	-24,5%	6%	3%
Campania	131	9,3%	5%	3%
Emilia Romagna	52	-9,0%	3%	3%
Friuli Venezia Giulia	16	-16,5%	1%	1%
Lazio	42	-10,6%	2%	3%
Liguria	8	11,5%	1%	3%
Lombardia	84	7,6%	2%	3%
Marche	84	197,1%	1%	0%
Molise	20	-79,4%	1%	0%
Piemonte	17	-13,6%	1%	1%
Prov. Aut. Bolzano	20	20,5%	2%	1%
Prov. Aut. Trento	9	7,4%	0%	0%
Puglia	65	-20,2%	3%	2%
Sardegna	143	22,0%	2%	0%
Sicilia	71	11,1%	4%	3%
Toscana	40	14,5%	1%	4%
Umbria	74	-36,5%	2%	0%
Valle D'Aosta	18	-38,5%	0%	0%
Veneto	95	64,7%	1%	0%
<b>ITALIA</b>	<b>71</b>	<b>5,0%</b>	<b>2%</b>	<b>2%</b>

Nota: nella prima colonna rosso e verde indicano rispettivamente una performance regionale in peggioramento, o in miglioramento, rispetto alla settimana precedente.

Nella seconda colonna rosso e verde indicano rispettivamente un aumento o una diminuzione di nuovi casi rispetto alla settimana precedente.

Nelle ultime 2 colonne rosso e verde indicano il superamento, o meno, della soglia di saturazione del 40% per l'area medica e del 30% per le terapie intensive (dati Agenas).