



Population: 60 990 277 • Income group: High • Gross national income per capita: US\$ 35 860

INSTITUTIONAL FRAMEWORK

Lead agency	Ministry of Transport - Directorate General Road Safety
Funded in national budget	Yes
National road safety strategy	Yes
Funding to implement strategy	Partially funded
Fatality reduction target	50% (2011–2020)

SAFER ROADS AND MOBILITY

Formal audits required for new road construction projects	Yes
Regular inspections of existing road infrastructure	Yes
Policies to promote walking or cycling	Yes
Policies to encourage investment in public transport	Subnational
Policies to separate road users and protect VRUs	Yes

SAFER VEHICLES

Total registered vehicles for 2013	51 269 218
Cars and 4-wheeled light vehicles	40 836 379
Motorized 2- and 3-wheelers	9 014 591
Heavy trucks	895 004
Buses	98 551
Other	424 693
Vehicle standards applied ^a	
Frontal impact standard	Yes
Electronic stability control	Yes
Pedestrian protection	Yes

^a UNECE WP29.

POST-CRASH CARE

Emergency room injury surveillance system	Yes
Emergency access telephone numbers	118
Permanently disabled due to road traffic crash	2.5% ^b

^b 2011, SINIACA-IDB.

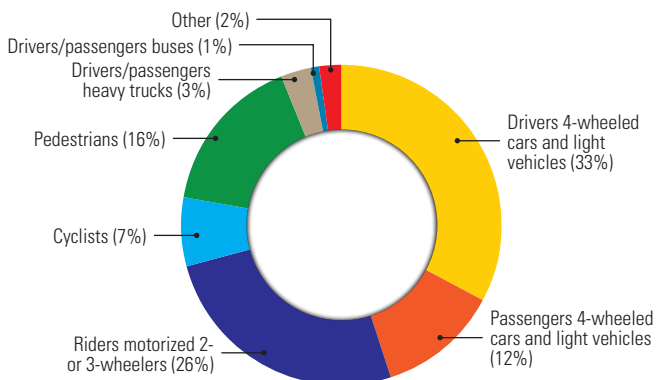
DATA

Reported road traffic fatalities (2013)	3 385 ^c (79% M, 21% F)
WHO estimated road traffic fatalities	3 721
WHO estimated rate per 100 000 population	6.1
Estimated GDP lost due to road traffic crashes	1.8% ^d

^c Italian National Institute of Statistics. Defined as died within 30 days of crash.

^d 2011, Ministry of Infrastructure and Transport.

DEATHS BY ROAD USER CATEGORY



Source: 2013, Italian National Institute of Statistics.

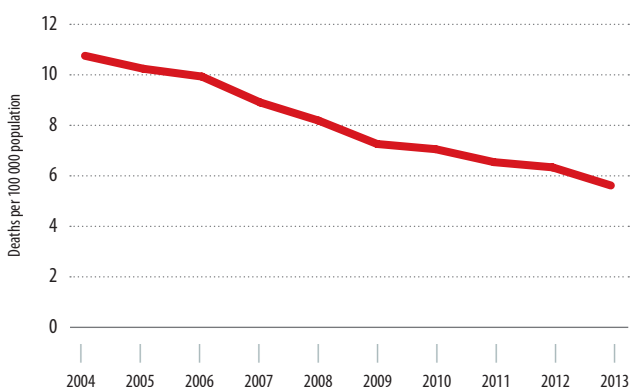
SAFER ROAD USERS

National speed limit law	Yes
Max urban speed limit	50 km/h
Max rural speed limit	90 km/h
Max motorway speed limit	150 km/h
Local authorities can modify limits	Yes
Enforcement	0 1 2 3 4 5 6 7 8 9 10
National drink–driving law	Yes
BAC limit – general population	≤ 0.05 g/dl
BAC limit – young or novice drivers	0.00 g/dl
Random breath testing carried out	Yes
Enforcement	0 1 2 3 4 5 6 7 8 9 10
% road traffic deaths involving alcohol	25% ^e
National motorcycle helmet law	Yes
Applies to drivers and passengers	Yes
Law requires helmet to be fastened	Yes
Law refers to helmet standard	Yes
Enforcement	0 1 2 3 4 5 6 7 8 9 10
Helmet wearing rate	90% All riders ^f
National seat-belt law	Yes
Applies to front and rear seat occupants	Yes
Enforcement	0 1 2 3 4 5 6 7 8 9 10
Seat-belt wearing rate	64% Front seats ^f , 10% Rear seats ^f
National child restraint law	Yes
Restrictions on children sitting in front seat	No
Child restraint law based on	Weight/Height
Enforcement	0 1 2 3 4 5 6 7 8 9 10
% children using child restraints	—
National law on mobile phone use while driving	Yes
Law prohibits hand-held mobile phone use	Yes
Law also applies to hands-free phones	No
National drug-driving law	Yes

^e 2012, «Prevenzione primaria dell'evento traumatico. Trauma Care - La cura definitiva del Trauma maggiore.»

^f 2011, Ministry of Infrastructure and Transport.

TRENDS IN REPORTED ROAD TRAFFIC DEATHS



Source: Italian National Institute of Statistics.